



## **Richfield City Council Agenda**

**February 24, 2026 -- 5:30 PM**

**Richfield Municipal Center  
Bartholomew Conference Room  
6700 Portland Avenue South**

- 1. Call to Order**
- 2. Item Discussion**
  - a. Climate Action Plan (CAP)**
  - b. Veterans Park Improvements**
- 3. Adjournment**

Auxiliary aids for individuals with disabilities are available upon request. Requests must be made at least 96 hours in advance to the City Clerk at 612-861-9739.

Includes Materials - Materials relating to these agenda items can be found in the Council Chambers Agenda Packet book located by the entrance. The complete Council Agenda Packet is available electronically on the City of Richfield website.



**Report Prepared By:**  
Rachel Lindholm, Sustainability Coordinator

**Department Director:**  
Karl Huemiller, Recreation Director

**Item for Consideration:**  
**Climate Action Plan (CAP)**

### **EXECUTIVE SUMMARY**

Richfield's initial Climate Action Plan is five years old and is in need of various updates. The new plan adopts the state goal to reduce emissions 50% by 2030 (from 2018 levels) and to be carbon-neutral by 2050. The plan update also highlights achievements from the last CAP, details climate change effects experienced in Richfield, and includes a vulnerability assessment to better understand which specific populations are affected by various climate hazards and how. Two new goals were introduced focusing on public health and emergency preparedness, and strengthening internal capacity. Various actions were revised, removed, or added to refresh the City's sustainability work plan and continue interdepartmental efforts.

### **RECOMMENDED ACTION**

**Review the draft CAP, provide feedback, and confirm whether the revised document may proceed to a future council meeting for formal approval following edits.**

### **HISTORICAL CONTEXT**

- Richfield's first CAP was written in 2020 and was intended to cover five years.
- Richfield's first emissions inventory was conducted in 2023.
- With the first CAP reaching the end of its proposed timeframe, many actions being completed or requiring revision, and the emissions inventory outdated, developing a new CAP became a division priority.
- Staff obtained quotes and selected Local Climate Solutions (LCS) to conduct an actions inventory, revise existing unfinished actions, and create the new plan, including a vulnerability assessment and Richfield-specific climate change data.
- Staff worked with LCS from August 2025 to January 2026 to create the new CAP. Other city staff (Community Development, Public Works, Recreation) then reviewed and commented based on their areas of expertise.

### **EQUITABLE OR STRATEGIC CONSIDERATIONS OR IMPACTS**

This CAP builds on sustainability actions completed in the Strategic Plan. Many actions in the CAP specifically highlight the importance of equity, multilingual education and outreach, focusing efforts on marginalized and underresourced communities, and other

equitable considerations. The belief that climate justice is racial justice underpins much of the climate work and continues to shape city efforts.

**POLICIES (RESOLUTIONS, ORDINANCES, REGULATIONS, STATUTES, ETC.)**

Some of the actions relate specific policies (i.e. housing ordinances, building code, etc.). The CAP aligns with the 2023 state law requiring 100% clean electricity by 2040.

**CRITICAL TIMING ISSUES**

N/A

**FINANCIAL IMPACT**

There will be financial costs to some of the CAP actions. These will need to be included in future budgets.

**LEGAL CONSIDERATIONS**

Not applicable currently. When CAP actions include legal considerations, they will be reviewed by the City Attorney.

**ALTERNATIVE RECOMMENDATION(S)**

None.

**ATTACHMENTS**

- 1. 20260126 Richfield CAP Update draft
- 2. CAP work session slides 2-24-26



# Climate Action Plan Update

City of Richfield

January 2026

# Contents

No. 01 **Introduction** .....1  
Plan Update .....2  
Progress .....3

No. 02 **Climate Snapshot**..... 4  
Greenhouse Gas Emissions.....4  
Climate Change in Richfield.....5  
Vulnerability Assessment.....8

No. 03 **Action Plan** ..... 14  
Goal 1 Develop & Promote Energy Efficiency .....15  
Goal 2 Develop & Promote Sustainable Transportation .....17  
Goal 3 Promote Renewable Energy Installation & Purchasing .....18  
Goal 4 Encourage Sustainable Design & Building Practices .....19  
Goal 5 Strengthen & Expand Natural Resource Management .....20  
Goal 6 Reduce Waste Generated.....22  
Goal 7 Improve Access to Local & Healthy Food .....23  
Goal 8 Build Resilience Through Emergency Preparedness  
& Public Health .....24  
Goal 9 Strengthen Internal Capacity.....25



Plan prepared by Local Climate Solutions  
Graphics by Jess Vetrano  
Special thanks to City of Richfield Staff

No. 01

# Introduction

This document is an updated version of the Climate Action Plan (CAP), refined to reflect the City’s progress, reassess priorities, and incorporate emerging technologies, policies, and community needs. Richfield has made considerable progress toward its climate goals over the past five years, completing many of the actions included in the original plan. This updated CAP builds on that momentum and advances the City’s long-term goal of becoming carbon neutral.

As the global temperature rises and climate systems shift, local weather patterns are becoming more volatile and unpredictable. It is increasingly important to reduce emissions and prepare for the climate impacts that have already begun. These climate impacts will continue to affect everyone, with a disproportionate effect on marginalized populations. This means our friends, family, and neighbors who are especially at risk, including those who are seniors, people of color, disabled people,

non-English speakers, low-income households, and those who are immunocompromised.

The Richfield community has a wealth of diversity and is committed to ensuring equity in all services and projects. This CAP reinforces that commitment by outlining strategies that support the well-being of our community members. Addressing climate change in Richfield is an opportunity for cleaner indoor and outdoor air, more stable energy and transportation costs, expanded access to healthy food, complete transportation systems, more active living, and healthy urban ecosystems—all of which help to create a more connected, equitable, and climate-resilient community.

This CAP details actions to help achieve both short- and long-term goals for Richfield’s sustainability efforts. The actions stem from policies included in the 2040 Comprehensive Plan, as well as staff and resident input, and are aimed at achieving the following nine goals:

1. Develop & Promote Energy Efficiency
2. Develop & Promote Sustainable Transportation
3. Promote Renewable Energy Installation & Purchasing

4. Encourage Sustainable Design & Building Practices
5. Strengthen & Expand Natural Resources
6. Reduce Waste Generated
7. Improve Access to Local & Healthy Food
8. Build Resilience through Emergency Preparedness & Public Health
9. Strengthen Internal Capacity

As the climate continues to change, the technologies, policies, and best practices needed to address the causes of climate change will also evolve. The City of Richfield will modify its efforts to meet emerging needs and opportunities alongside these changes. Continued success will require collaboration across the community, with roles for residents, businesses, institutions, and City government. By working together, Richfield can prepare for future climate impacts while achieving meaningful benefits today.

## Plan Update

The original CAP was designed to be reviewed and updated regularly to reflect progress, new opportunities, and evolving community needs. Since its adoption, several factors have prompted the City to refine and expand the plan:

### + Significant progress on climate action:

Many of the actions outlined in the 2020 CAP have been partially or fully achieved. There is an opportunity to build on that progress and identify new priorities.

### + Updated emissions reduction goals:

There is a greater sense of urgency to reduce emissions more rapidly as we approach the long-range 1.5°C target set in the Paris Climate Agreement. This CAP adopts the State goals to reduce emissions 50% (*from 2018*) by 2030 and to be carbon neutral by 2050.

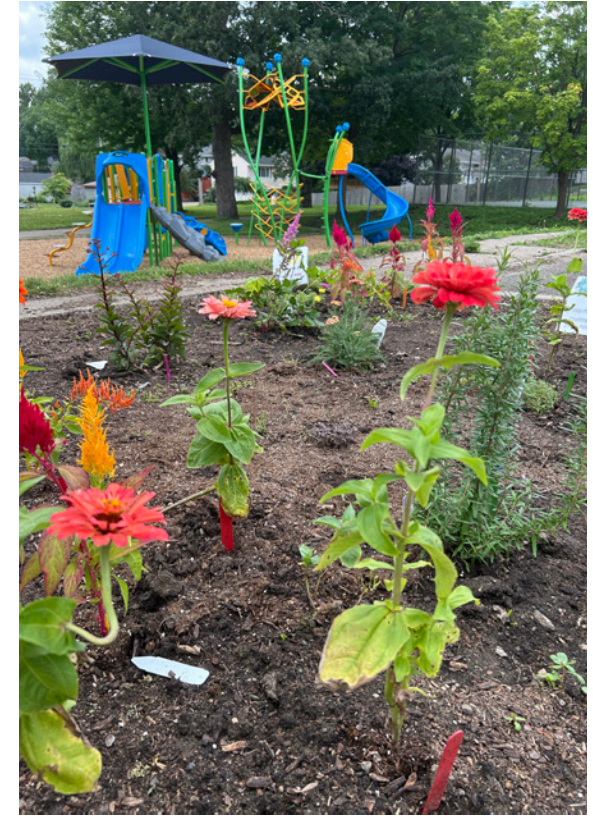
### + Gaps in public health and emergency preparedness:

Increasing climate hazards have underscored the need to better integrate public health, social vulnerability, and emergency preparedness into the CAP. This plan includes a vulnerability assessment of how residents, natural resources, and infrastructure may be impacted by climate hazards. A new goal has also been added to bolster the plan.

### + Technological advancements in clean energy:

Improvements in thermal energy systems, battery storage, and electric appliances have made electrification more feasible, cost-effective, and appealing for residents and businesses. For example, innovations in geothermal energy have achieved efficiencies of 500%, meaning the energy output is five times greater than the energy input. These systems can be networked so that multiple buildings can take advantage of the thermal energy source. Cold climate air source heat pumps can efficiently produce heat down to negative 20°F, improving their reliability in a cold weather state. Lastly, battery storage technologies have improved while costs have gone down, making them a more viable source of back-up electricity.

Each of these factors is reflected in the updated CAP, creating a more comprehensive and actionable roadmap for advancing climate action in Richfield. The remainder of the CAP is organized to 1) summarize progress made to date, 2) provide background information on GHG emissions in the city, 3) highlight projected climate hazards as well as the potential impacts on people, natural resources, and infrastructure, and 4) present the plan with updated goals, objectives, and actions.



This plan is meant to both inform and engage community members and to provide City staff with a clear pathway to advance climate action. Successful implementation will require a collective effort that brings the community together to reduce emissions and strengthen resilience to build a more sustainable and climate-resilient Richfield.



## Progress

### Building Energy:

- ☑ Completed the Partners in Energy program and fully executed the related implementation plan
- ☑ Used \$43,000 of American Rescue Plan Act (ARPA) funds to implement electric efficiency upgrades at City Hall and the parking lot lighting.
- ☑ Completed 14 municipal building audits using ARPA funds to identify gas and electric efficiency upgrade opportunities.
- ☑ Received Energy Efficiency and Conservation Block Grant (EECBG) funding to implement electrical efficiency upgrades and install LED lighting inside City Hall, Fire Station #2, and three municipal liquor stores.

### Sustainable Transportation:

- ☑ Contracted with Sawatch Labs to conduct an electric vehicle suitability assessment/fleet study to understand to support fleet electrification.
- ☑ Passed an ordinance requiring bike parking at all multi-unit housing and commercial developments.

### Natural Resources:

- ☑ Conducted a pond inventory and created improvement plans
- ☑ Implemented low-salt training and practices to decrease salt application.

### Waste:

- ☑ Added small electronics collection as an additional free service for residents during one of the annual shred events.
- ☑ Organized residential solid waste collection, with three haulers providing service to 1 to 3-unit properties.
- ☑ Many municipal buildings have implemented organics collection, including City Hall, Community Center, Public Works, Water Plant, and Wood Lake Nature Center.

### Local and Healthy Food:

- ☑ Launched multiple pocket community gardens in parks, including the main location in Veterans Park.
- ☑ The City initiated a toolshed lending library and an annual seed swap.
- ☑ Revised the fowl ordinance to allow for more fowl per household to be kept in the city with increased education and license requirements.
- ☑ City staff created a walkshed map to identify areas across the city that are not within one mile of a grocery store.

No. 02

# Climate Snapshot

## Greenhouse Gas Emissions

Burning fossil fuels like oil, gas, and coal releases greenhouse gases (GHGs). These gases act like a blanket around the Earth, trapping heat from the sun as it bounces off the Earth's surface. As these gases accumulate in the atmosphere, more heat is trapped, which drives up global temperatures. Since the Industrial Revolution, Earth's long-term average temperature has increased by 1.3°C (2.3°F). That warming contributes to changes in climatic systems. To slow down climate change, we must rapidly reduce GHG emissions and begin to build adaptation measures into our daily lives.

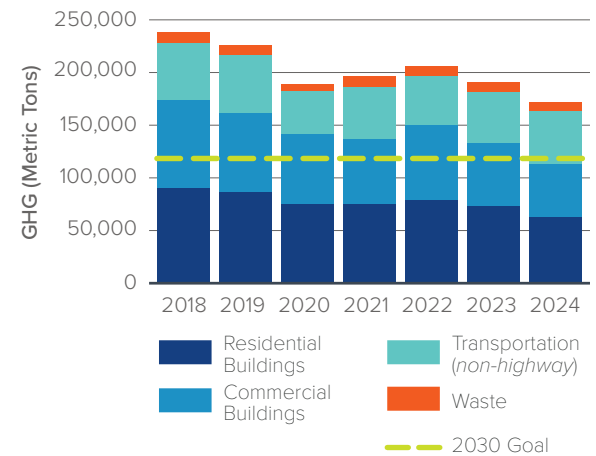
More than 70% of global emissions are generated from activities that occur in our cities, including driving, heating and cooling buildings, consuming electricity, and managing waste. Burning fossil fuels has effects beyond contributing to climate change: they also produce outdoor and indoor air pollution that harms human health and degrades ecosystems. By reducing GHG emissions in Richfield, the community will not only lessen our contribution to climate change, but also improve

air quality, strengthen public health, stabilize energy bills, and protect natural resources.

Since 2018, Richfield has seen a 28% decrease in its total citywide emissions. Much of the decrease can be attributed to cleaner electricity generation and increased energy efficiency. In line with the State's climate goals to reduce emissions by 50% by 2030, Richfield has also set that target using 2018 as the baseline year. The dashed lime green line in [Figure 01.1](#) indicates the 2030 target. The City will need to reduce emissions an additional 23% over the next four years to meet the target.

Minnesota State law requires 100% carbon free electricity by 2040, and Xcel Energy plans to reach 80% of that goal by 2030. As the electric grid incorporates more clean energy sources into generation, emissions will continue to decline in that sector. However, the City will also need to advance complementary strategies to reduce emissions from natural gas used in buildings and fuels used for transportation. This includes improving energy efficiency, accelerating building

Figure 01.1 Citywide GHG Emissions 2018-2024



electrification, supporting widespread adoption of electric vehicles (including e-bikes), and expanding transportation options like transit, biking, and walking. Additionally, reducing waste, increasing recycling, and diverting organics can help decrease emissions from waste management. Because of projected reductions from cleaner electricity, Richfield is well-positioned to achieve its 2030 emissions target. A focus on thermal energy use and transportation will help ensure the city meets its goals and that all residents benefit from climate action.

## Climate Change in Richfield

Due to rising greenhouse gas emissions, global temperatures are increasing at an accelerated pace. In 2023, average annual global temperatures spiked to 1.54°C (2.77° F) above pre-industrial levels, becoming the first individual year to exceed the 1.5°C warming threshold set by the Paris Climate Agreement ([Berkeley Earth Temperature Report](#)). In 2024, the global average annual temperature was estimated at 1.62°C (2.91°F). Because the Paris Climate Agreement target is based on long-term average temperatures, the target has not yet been exceeded. Nevertheless, 2025 is on track to be the third warmest year on average just behind 2023 and 2024, respectively, and scientists now anticipate that we will cross the 1.5°C threshold by 2030 ([World Meteorological Organization](#)).

Rising global temperatures are contributing to changes in our climatic and Earth systems. There has been a noticeable increase in heavy precipitation events worldwide, hurricanes have become more frequent and intense, deadly heatwaves have become more common, and droughts are stressing water sources and agricultural productivity. Critical Earth systems like ocean currents, permafrost, glaciers, and coral reefs are being pushed to their tipping points.

Locally, Richfield is already feeling the effects of climate change. Autumns have become extensions of hot summers, with temperatures hitting 90°F in October twice in the past three years. Air quality alerts have significantly increased in frequency and severity over the past few years due to wildfire smoke from the western United States, Canada, and northern Minnesota ([Figure 02.1](#)). After periods of drought, the Twin Cities has experienced heavy rain events that have led to flash flooding. These hazards limit outdoor activities and threaten human health, especially for vulnerable groups.

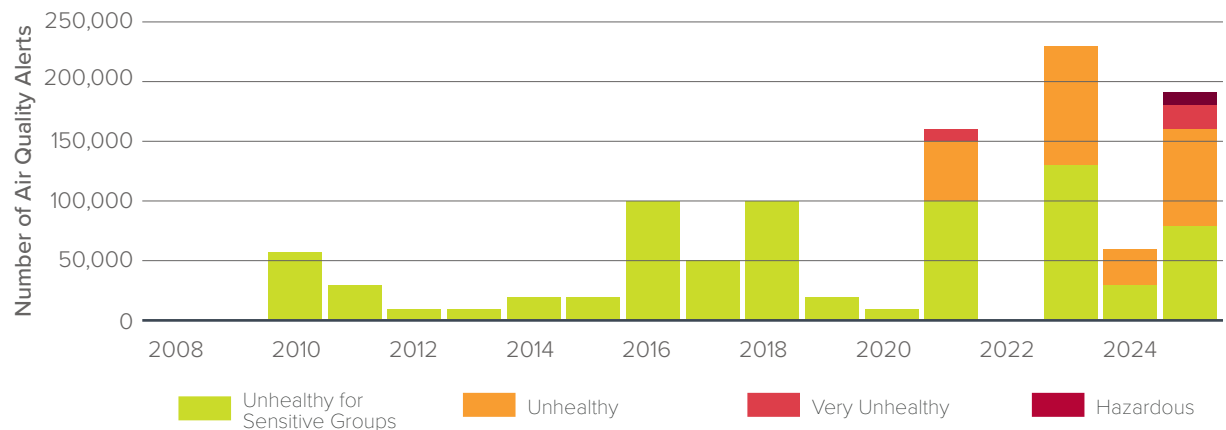
As global temperatures rise, we will continue to see local impacts in Richfield, especially changes in precipitation patterns and heatwaves. The University of Minnesota created an interactive

online tool called CliMAT, which provides localized climate projections for communities across the state. The tool allows users to visualize what Minnesota's future climate might look like under different emissions scenarios, variables, and time periods. Using the mid-century, high emissions scenario at the county level, we can expect the following projections:

### + Warmer summers:

Average summer high temperatures are expected to be 87.0°F by midcentury, an increase by 4.8°F above the historical average (1995 – 2014). The number of days annually that exceed 90°F is projected to increase to about 43 days, or 22 days above the historical average (1995-2014).

**Figure 02.1** Summer Air Quality Days  
Data Source: Minnesota Pollution Control Agency via the Minnesota Star Tribune



### + Warmer winters:

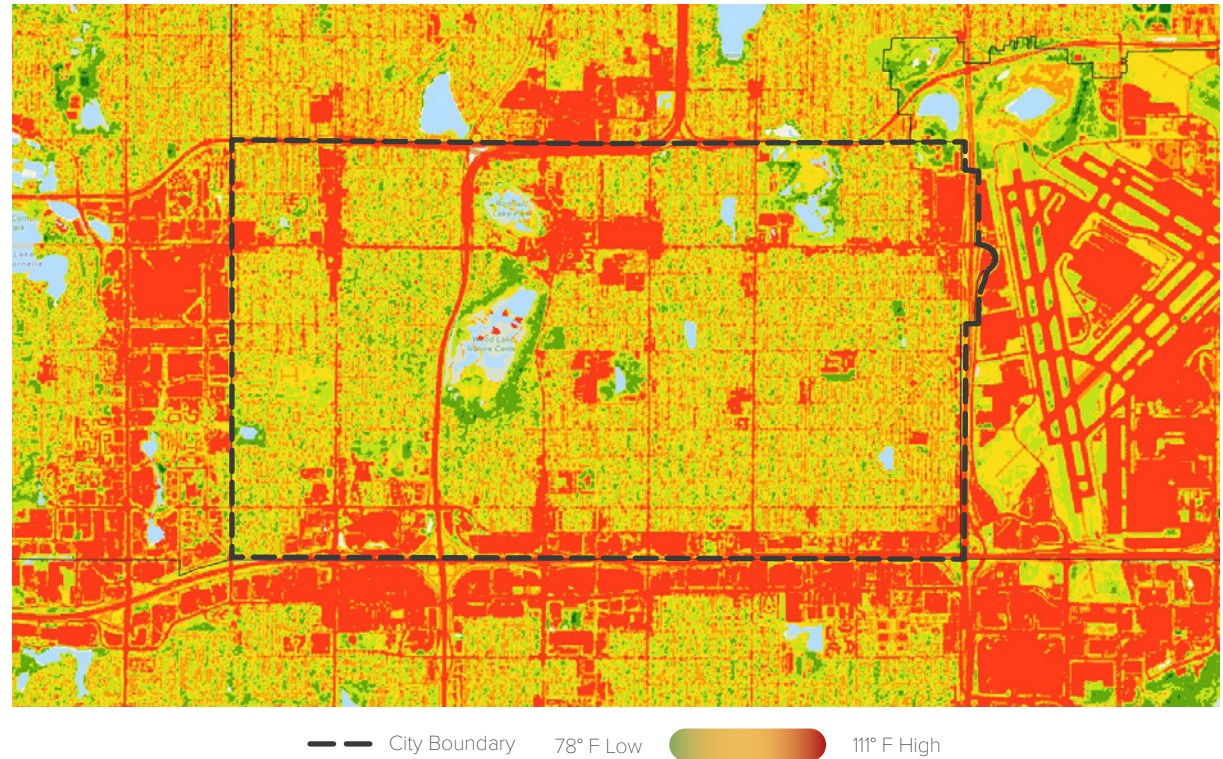
The daily average temperature is projected to be 23.7°F, 5.6°F above the historical average (1995-2014). The daily average low temperature is projected to be 16.3°F, 6.5°F above the historical average (1995-2014).

### + Precipitation patterns:

Annual maximum precipitation for a single day in Hennepin County is projected to be 4.1 inches. Precipitation is not expected to change uniformly throughout the year—rather, winter and spring precipitation are projected to increase, while summer precipitation is expected to decrease, leading to wider extremes of wet and dry periods.

Warmer summer temperatures will be felt through prolonged heatwaves. With a near doubling of the days where the temperature exceeds 90 degrees, we can expect to see more heat-related illnesses, especially among vulnerable populations. Factors that can contribute to even higher localized temperatures include greater amounts of impervious surfaces like asphalt, concrete, and brick combined with low vegetation. In these areas, the temperature can be much higher than surrounding areas that have relatively high vegetative land cover. This is known as the urban heat island effect. [Figure 02.2](#) shows the areas of Richfield where temperatures are impacted by the urban heat island. The map highlights commercial districts and highways where urban heat island is prevalent. It also demonstrates that there are few

**Figure 02.2** Extreme Heat Map of Richfield: Red and orange values show areas that are more at risk for extreme heat.  
Source: Metropolitan Council



areas of the city with vegetative land cover that has a localized cooling effect.

Warmer winter temperatures will change precipitation patterns such that we might see more freezing rain. This can pose a threat to the city's trees by breaking branches or potentially uprooting trees due to the weight of frozen rain or heavy, wet snow. Freezing rain can also create dangerous driving and walking conditions that threaten public safety and health. Warmer winter temperatures will increase freeze/thaw cycles, impacting infrastructure like pipes and roads,

causing costs to rise as the City will need to cover increased repairs.

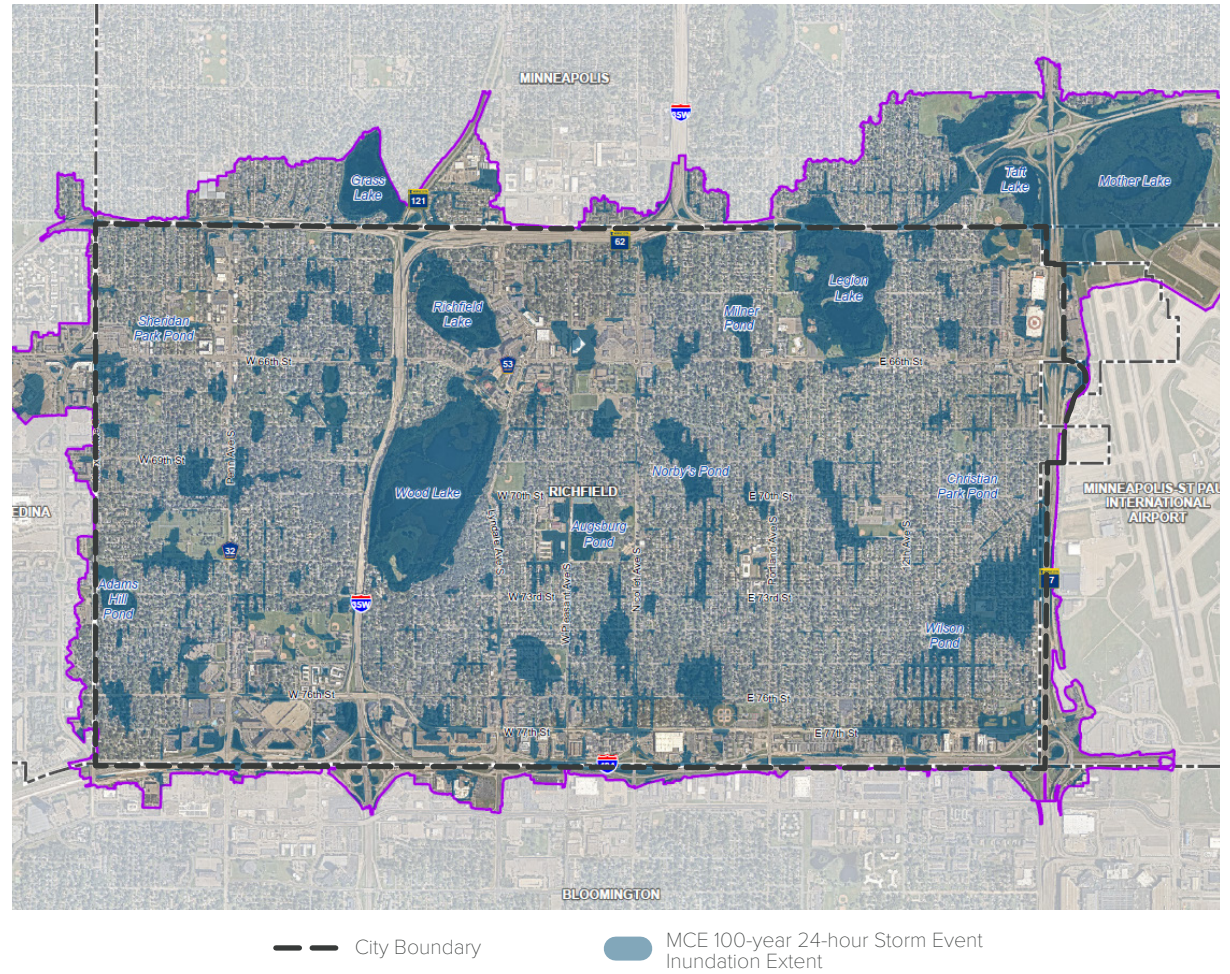
Richfield will also need to prepare for changes in precipitation patterns. Precipitation is projected to reach 34.5 inches annually by mid-century, which is an increase of 1.1 inches (3% change). While this is not a dramatic increase in the amount of projected precipitation, the patterns of rain and snow fall will change. For example, it is expected that the increase in precipitation will happen more in winter and spring with drier summers. Additionally, rain may fall with greater intensity,

leading to flash flooding that can damage property and infrastructure and pose a risk to human health.

**Figure 02.3** illustrates areas of the City that may be more susceptible to localized flooding. Some of these areas correspond to urban heat islands, underscoring the importance of adaptation strategies that can address both hazards.

Current and projected climate hazards pose a risk to public health, infrastructure, property, and natural resources. Understanding the potential risks and interactions can inform adaptation strategies to minimize harm. The next section looks at how people, infrastructure, and natural resources are impacted by various climate hazards and where there are greater vulnerabilities.

**Figure 02.3** Localized Flood Map. Blue areas show areas that are most at risk for flooding.  
Source: City of Richfield



## Vulnerability Assessment

A vulnerability assessment helps communities evaluate how climate hazards may affect people, infrastructure, and natural resources. These impacts depend both on the level of exposure to hazards and on existing vulnerabilities within the community. As climate hazards increase in frequency and intensity, the risks they pose also grow. In the Twin Cities, the most likely hazards are heat waves, heavy precipitation events, periods of drought, and poor air quality.

It is important to understand who and what might be susceptible to these hazards. Aging infrastructure—or infrastructure that was not designed to withstand future climate conditions—is more vulnerable to damage or failure. Natural resources that are already stressed by shifting temperature and precipitation patterns might be less resilient and more affected by extreme events. People impacted by climate hazards may experience them unevenly. Social, health, economic, and demographic factors influence how community members are impacted. For example, a senior living alone without access to air conditioning may be vulnerable to prolonged heatwaves.

There are multiple resources available to inform a population vulnerability assessment for Richfield. To identify which populations are most vulnerable to climate hazards, this Plan uses U.S. Census data combined with the Environmental Justice Areas

map from the Minnesota Pollution Control Agency (*MPCA*). The MPCA defines environmental justice areas as census tracts where:

- + At least 40% of the population is people of color;
- + At least 35% of households have income at or below 200% of the federal poverty level;
- + At least 40% of the population has limited English proficiency in English; or
- + Are located in a federally recognized tribal reservation.

Based on the MPCA map, four census tracts in Richfield meet the criteria for environmental justice areas. These tracts include neighborhoods with higher proportions of people of color, as well as one census tract where more than 35% of households earn 200% or less of the federal poverty level. These communities may be more vulnerable to the impacts of climate change due to a historic underinvestment and discriminatory housing practices that contributed to persistent economic disadvantage, limiting the ability to recover from an extreme event.

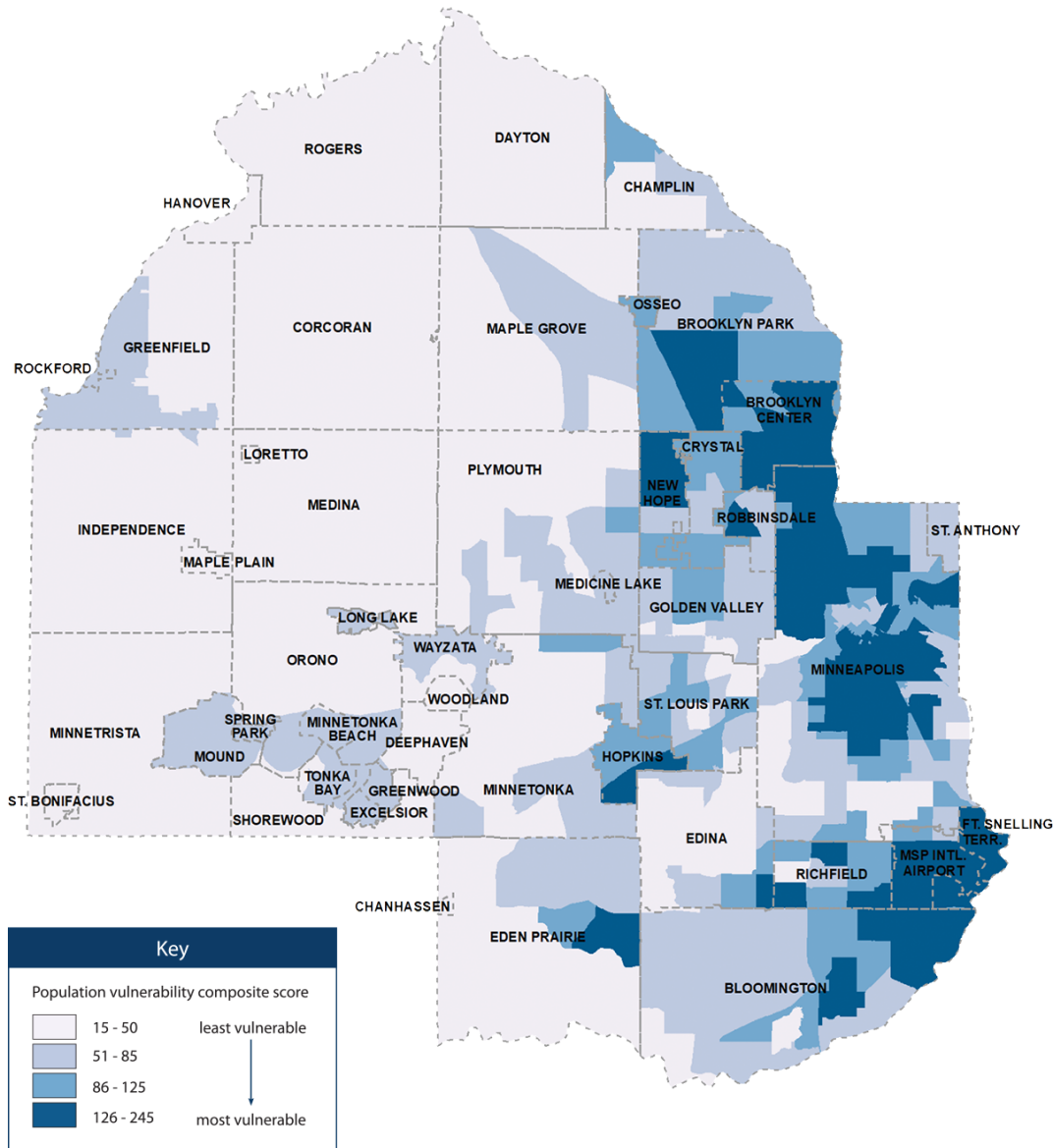
The Federal Emergency Management Agency (*FEMA*) created the National Risk Index, a complementary mapping tool that shows hazard risk, social vulnerability, and community resilience. While this map suggests high resilience for the community, it also indicates that there are

relatively high social vulnerabilities that align with the MPCA Environmental Justice Areas map.

Food security is an important and sometimes overlooked aspect of climate vulnerability. Changes in temperature, droughts, and more frequent intense rainfall and floods can disrupt food systems, potentially affecting availability, quality, and prices. These disruptions will be felt most by households already experiencing food insecurity. The University of Minnesota created a Food Security Dashboard that allows users



**Figure 02.4** Population Vulnerability in Hennepin County  
 Source: [Hennepin County Climate Vulnerability Assessment](#)



to explore current and historical levels of food insecurity. In Richfield, seven census tracts have food insecurity rates above the Hennepin County average rate of 10.5%. Two are above the national average rate of 14.3%.

Hennepin County completed a vulnerability assessment in 2021 that assesses the potential risks of current and projected climate hazards to public health, water, transportation systems, natural areas, and built infrastructure. This assessment focuses on the potential impact from the four major climate risks: warmer winters; extreme precipitation; warming, heat, and humidity; and drought. This assessment also includes a population vulnerability map that combines several factors to measure a population vulnerability composite score, illustrating where people may be more vulnerable to climate changes ([Figure 02.4](#)). The areas in darker blue show greater vulnerability based on social, political, and economic factors. This analysis further emphasizes that several census tracts in Richfield may be highly vulnerable to various climate hazards.

The remainder of this section uses the above resources as well as demographic data from [MN Compass](#) to explore the various climate hazards, vulnerabilities, and how people, infrastructure, and natural resources are affected by the shocks and stressors of a changing climate. This assessment is used to inform actions aimed at building resilience and improving public health in the community.

## 1 Extreme Heat & Urban Heat Island Effect:

Richfield is experiencing more days with temperatures above 90°F and longer heat waves. Areas with a high concentration of pavement and buildings become even hotter than other areas because these materials retain heat from the sun, known as the urban heat island effect. In these areas, hot days are even more hazardous because of the additional heat effect.

The greatest risk of exposure to extreme heat is near highways (*I35W, I494, Highway 62, Highway 77*), arterial roads, and commercial districts. Cooler areas of the City are near Wood Lake Nature Center, Veteran's, Augsburg, Adams Hill, Donaldson, and Taft parks.

### + Vulnerable Populations:

- **Adults over 65** (*19% of Richfield Residents*): More prone to heat-related illnesses, such as heat stroke and dehydration. Those who live alone, do not have access to air conditioning, and who have limited social support are particularly vulnerable.
- **Young children** (*5% under the age of 5*): Higher risk of dehydration and heat exhaustion when spending time outside on very hot days. Young children may lack the judgement to limit their exertion and remember to hydrate while playing outside during hot weather.



- **Low-income households** (*29% are cost-burdened*): May struggle to afford air conditioning units or increased energy bills associated with running air conditioning.
- **Renters in multi-family housing** (*39% of housing units*): May not have central air conditioning or the ability to afford a window unit.
- **Outdoor workers** (*3% of workers in construction*): Increased risk of heat stroke and other heat-related illnesses with prolonged exposure to excessive heat.
- **Non-English speakers** (*9% speak English less than 'very well'*): May face challenges receiving or understanding heat warnings or cooling resources.

### + Natural Systems:

Extreme heat and higher temperatures can stress trees and other vegetation, limiting their ability to function and making them susceptible

to disease, while contributing to higher rates of mortality. Higher winter temperatures can contribute to more rain and ice events that can damage trees when ice or heavy, wet snow accumulates on branches.

### + Infrastructure:

Roads, bridges, and pipes are all susceptible to extreme temperatures, and drastic winter temperature swings that come from an increase in freeze/thaw cycles. Aging infrastructure and infrastructure that was not designed to handle extreme temperatures may be more vulnerable to high heat and/or freeze/thaw cycles. Further, more frequent freeze/thaw cycles can contribute to icy surfaces that can degrade pavement, create dangerous travel conditions, and increase salt application that further worsens water quality.



## ② Severe Storms & Power Outages:

Severe storms including straight-line winds, heavy rainfall, and hail pose risks of property damage and power outages. As these events intensify, they can cause immediate damage that requires expensive repairs, and they are increasingly likely to contribute to rising insurance premiums. Storm-related power outages can create serious challenges for residents who rely on medical equipment and critical infrastructure that depend on a reliable power supply.

Using the FEMA National Risk Index, Richfield is ranked as a moderate to very high risk for these severe storms. While the overall level of risk is relatively consistent across the community, outcomes can vary significantly. Social vulnerabilities, the condition of the urban forest, and the maintenance level of infrastructure all influence how different neighborhoods experience and recover from these events.

### + Vulnerable Populations:

- **Renters in multi-family housing** (39% of housing units): Less control over building resilience, may not have insurance, and can more easily be displaced.
- **Seniors (19%) and people with disabilities (12%)**: May be less able to evacuate or get to safety during extreme storms and may rely on medical equipment that requires power.

- **Low-income households** (7% experiencing poverty): Limited ability to recover from property damage or afford emergency preparedness resources.
- **Non-English Speakers** (9% speak English less than 'very well'): May face challenges receiving or understanding storm warnings in a timely manner.
- **People without reliable transportation** (10% do not own a vehicle, 12% with a disability): Those without access to personal vehicles, bikes, or transit may have difficulty reaching emergency shelters or resources. Residents with disabilities may also face mobility challenges to reach emergency shelter or access support after a storm.

### + Natural Systems:

Trees are vulnerable to extreme weather, especially with high winds, which can break branches and even uproot entire trees. Falling limbs or trees can damage property, threaten injury or death, and can hit power lines, causing widespread power outages.

### + Infrastructure:

Wind and hail can cause severe damage to buildings and infrastructure, leading to costly repairs and maintenance. Damage from these events has become more frequent and severe, contributing to significant increases in home insurance premiums.

### 3 Flooding & Water Damage:

More frequent heavy rainfall events increase the risk of flooding, particularly in areas with aging infrastructure and low-lying land. FEMA designates flood zones based on the likelihood that an area will be inundated by a flood event, and these zones are typically located near rivers or other water bodies. While Richfield does not have designated FEMA flood zones within its boundaries, heavy precipitation can still lead to flash-flooding and basement flooding in many parts of the city. Basement flooding can increase the likelihood of hazardous mold.

#### + Vulnerable Populations:

- **Residents in flood-prone areas:** Low-lying neighborhoods and older buildings are at higher risk of water damage.
- **Low-income households** (*43% cost-burdened renter households; 22% cost-burdened owner households*): Less financial flexibility or ability to repair flood damage or relocate if home becomes uninhabitable due to flooding.
- **Renters in older buildings** (*68% of buildings constructed before 1970*): More difficult to repair water damage and more risk of mold.



- **Non-English speakers** (*9% speak English less than 'very well'*): May face challenges receiving or understanding flood warnings.

#### + Natural Systems:

Increased runoff from heavy precipitation can degrade water quality by carrying pollutants into rivers, lakes, and wetlands, and by raising water temperatures. Saturated soils can weaken tree root structures, making trees more susceptible to uprooting during strong winds. Over time, changing precipitation patterns can

strain the health of ecosystems, limiting their ability to thrive.

#### + Infrastructure:

Flooding events can cause severe damage to buildings and infrastructure. Basement flooding can cause costly repairs. Roads can be flooded or washed out from excess water, creating dangerous situations and expensive damage.

## 4 Air Quality & Wildfire Smoke:

Burning fossil fuels—such as coal, natural gas, oil, gasoline, and diesel— not only contributes to climate change but also degrades indoor and outdoor air quality by releasing harmful pollutants. Particulate matter from wildfire smoke can trigger or aggravate respiratory illnesses. As wildfires grow in intensity and frequency, their effects on local air quality are a growing concern. Additionally, increases in pollen blooms can further degrade air quality, particularly affecting those with seasonal allergies or respiratory illnesses like asthma.

Air quality in Richfield tends to be worse near highways and major roads. Heavy traffic is a daily source of pollutants. Seasonally, all areas of the city can be impacted by increased pollen and/or wildfire smoke. The pollution is compounded in those areas that experience poor air quality daily. Indoor cooking with gas also contributes to poor air quality (*National Institute of Health*). Homes with inadequate air filtration and circulation will be more vulnerable to both indoor and outdoor pollution—these are often older homes that lack central air conditioning.

### + Vulnerable Populations:

- **Children** (5% under the age of 5) and **Adults over 65** (19%): More sensitive to poor air quality and more susceptible to asthma attacks and respiratory distress.
- **People with pre-existing health conditions** (e.g., *asthma, COPD, heart disease*): Poor air quality exacerbates certain health conditions.
- **Outdoor workers** (3% workers in construction): Increased exposure to polluted air without proper protective equipment and measures increases health risks.
- **Low-income residents** (7% experiencing poverty): May not be able to afford or access air purifiers, conditioned spaces, allergy medicine, or the ability to stay indoors during poor air quality events.
- **Residents with allergies** (the CDC estimates that 25.7% of adults experience seasonal allergies): Allergies can cause discomfort and interfere with a person's sleep quality, planned activities, and productivity in school or at work.

### + Natural Systems:

The impact of air pollution on natural systems depends on the proximity to the source and the type of pollutant. While trees and other plants can help to filter air pollution, they can also be harmed by excessive pollutants. This can be seen when pollutants reduce photosynthesis, damage leaves and flowers, and diminish a tree's capacity to absorb CO<sub>2</sub>.



### + Infrastructure:

The impacts of air pollution on infrastructure occur slowly over time. More corrosive pollutants, such as sulfur dioxide, can corrode or dissolve building materials. Fine particulate matter from vehicle exhaust and other point source emissions can accumulate on surfaces requiring increased cleaning and maintenance.

No. 03

# Action Plan

This section includes the action plan, which consists of nine goals supported by objectives and actions designed to reduce GHG emissions, strengthen climate resilience, and improve public health. The actions build upon the previous version of this plan and have been refined based on the City's progress to date, continued relevance of strategies, and the addition of new actions needed to achieve the City's evolving goals.

The goals that are included in this updated CAP are:

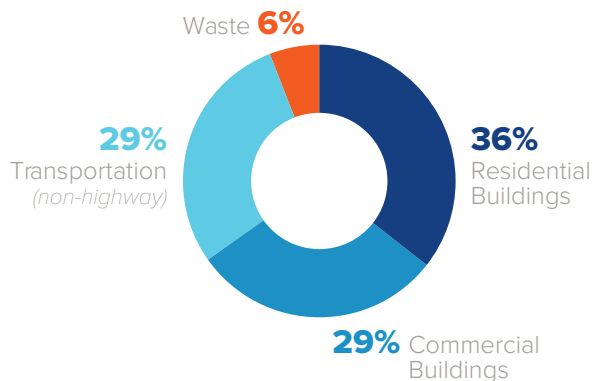
- + **Goal 1: Develop & Promote Energy Efficiency.**  
Understand Richfield's energy use and identify opportunities to reduce consumption, lower costs, and lessen environmental impacts.
- + **Goal 2: Develop & Promote Sustainable Transportation.**  
Shift travel patterns toward more sustainable, active, and low-emission modes.
- + **Goal 3: Promote Renewable Energy Installation.**  
Reduce reliance on fossil fuels and expand education on incentives for installing renewable energy systems.
- + **Goal 4: Encourage Sustainable Design & Building.**  
Ensure design and construction plans incorporate environmental best practices that improve building performance and environmental impact throughout the life cycle.
- + **Goal 5: Strengthen & Expand Natural Resources.**  
Inventory and enhance the community's natural resources while engaging residents in the stewardship of trees, parks, and bodies of water.
- + **Goal 6: Reduce Waste Generated.**  
Promote responsible disposal, increased recycling and organics collection while moving toward a circular and low waste economy.
- + **Goal 7: Improve Access to Local & Healthy Food.**  
Expand access to purchasing, growing, and producing healthy and affordable food.
- + **Goal 8: Build Resilience through Emergency Preparedness & Public Health.**  
Prepare for future climate impacts through community preparedness efforts and public health resources and services that support health and well-being.
- + **Goal 9: Strengthen Internal Capacity.**  
Identify opportunities to integrate climate and sustainability actions into city policies, programs, budgets, and events. Encourage department leaders to consider impacts on emissions and resilience in daily work.

The first seven goals were initially identified in the original plan. A goal to build resilience through emergency preparedness and improved public health has been added to highlight the increasing need for climate adaptation and the essential role of public health in helping residents withstand and recover from climate-related hazards. The last goal has been added to bolster the effectiveness of this plan throughout departments in Richfield.

## Goal 1 Develop & Promote Energy Efficiency

Building energy emissions account for 65% of total citywide emissions ([Figure 03.1](#)). These emissions come from electricity generation used to power appliances—such as air conditioning, refrigerators, and electronics—and from natural gas used for cooking and space and water heating. In recent years, emissions from electricity generation have declined as the electric grid becomes cleaner through the expansion of renewable energy technologies. In contrast, natural gas emissions continue to follow weather patterns, increasing in colder winters and decreasing in warmer winters. Aside from energy-efficiency programs, there has been minimal progress in reducing emissions from natural gas use.

**Figure 03.1** Emissions by sector, Richfield GHG Inventory, 2024.



Richfield is primarily a residential community with several major commercial districts. Residential energy use accounts for approximately 55% of total building-related emissions in the community. Of those emissions, 65% now come from gas, a proportion that is expected to grow due to the ongoing decarbonization efforts of electricity generation. Because natural gas remains a significant source of emissions and heating costs make up a substantial share of household energy bills, these trends have important implications for energy burden, or the amount residents pay for energy relative to their household income.

As the cost of daily necessities like groceries, gas, and utility bills continue to rise, household budgets are increasingly strained. Energy experts consider an energy burden to be high when it exceeds 6% of household income, and severe when it exceeds 10%. In Minnesota, the average household energy burden is 2%. When adjusted for income, Richfield residents earning at or below 80% of the area median income spend an estimated 5% to 7% of their household income on energy costs, placing many households at or near a high energy burden threshold. The households with the lowest incomes spend 15% or more of their income on energy costs ([Low-Income Affordability Tool](#), Department of Energy).

Energy efficiency and electrification will result in much needed cost savings for residents, business owners, schools, and City operations. Heat pumps and thermal energy technologies are demonstrating deep energy efficiency capabilities and are proving to be viable solutions in cold climates. Additionally, there is a growing body of research that suggests that cooking on a gas stove contributes to poor indoor air quality and can have adverse effects on respiratory health. Electrifying gas equipment will help to significantly improve indoor air quality, making homes healthier and safer. The following actions will support a transition to cleaner and more affordable energy.

**+ Objective 1:** Share opportunities with residents and business owners to decrease energy costs and lower energy usage.

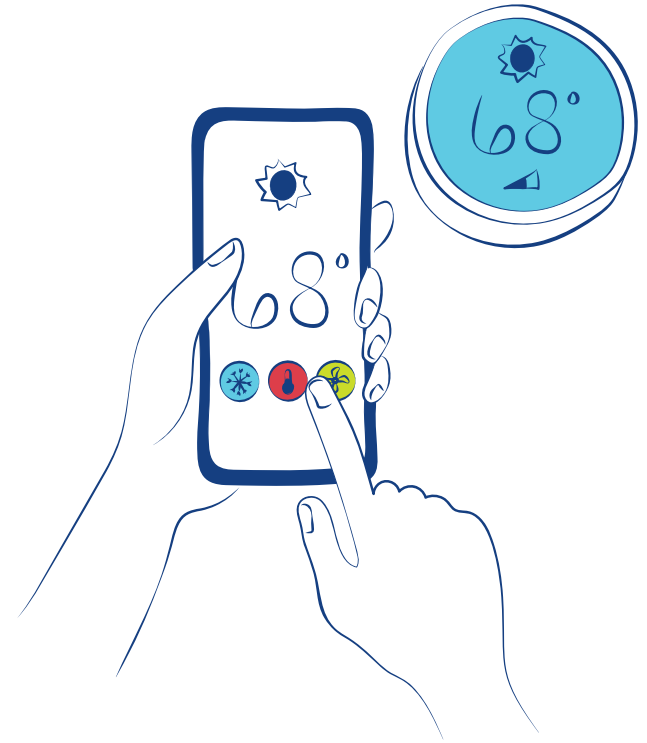
- 1.1** Provide resources to encourage commercial and large residential building owners to reduce energy use, explore electrification and on-site renewable energy, and increase energy efficiency.
- 1.2** Maintain the City webpage that provides information to help residents incorporate energy efficiency practices and technologies into their lives. Communicate these strategies through social media, e-newsletter, and event tabling.

+ **Objective 2:** Increase the energy efficiency of all municipal buildings and operations.

- 2.1** Track municipal energy consumption in B3, an energy benchmarking program.
- 2.2** Continue to make efficiency improvements to City buildings, based on audit recommendations.
- 2.3** Develop and implement a plan to replace existing Xcel metered and flat rate high-pressure sodium (*HPS*) streetlights with LED streetlights.

+ **Objective 3:** Increase opportunities and awareness about building electrification technologies.

- 3.1** Share state rebate and utility incentives to encourage residents and businesses to electrify their gas appliances with electric alternatives, including air-source/ground-source heat-pumps, heat-pump water heaters, heat-pump dryers, and induction ranges.
- 3.2** When renovating city buildings, price out the cost of electrification/removing natural gas infrastructure and implement when feasible.
- 3.3** Identify funding to support a cost-share pilot to help residents and businesses electrify gas appliances.



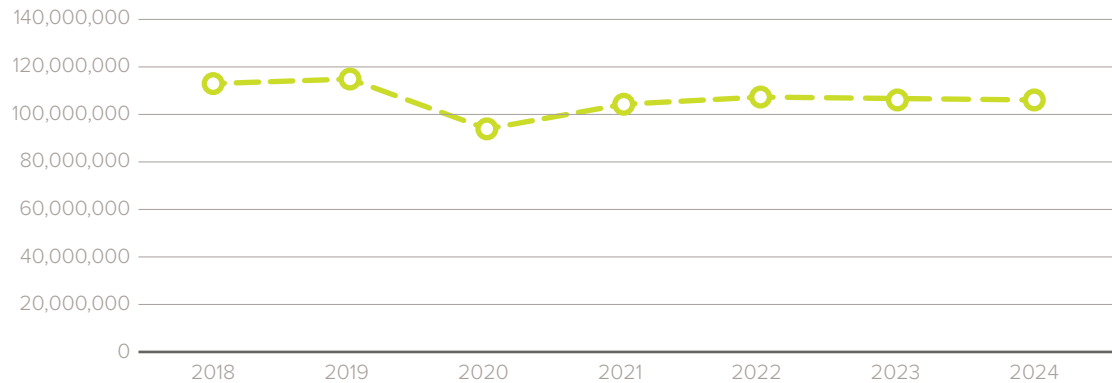
## Goal 2 Develop & Promote Sustainable Transportation

Transportation accounts for 29% of citywide emissions, which are calculated using the vehicle miles traveled (VMT) within the boundaries of the City. To better capture travel within the City, this calculation does not include vehicles traveling on the highways and interstate. Following a sharp decline in 2020, vehicle miles have leveled out just over 100 million miles per year for the past four years ([Figure 03.2](#)).

Approximately 75% of residents drive to work, while 4% take public transportation, and 21% walk, bike, or work from home. Strategies to reduce transportation-related emissions include transitioning to cleaner vehicles (e.g., *electric cars and bikes, hybrid vehicles*), and shifting travel modes from driving alone to transit, biking, or walking. The City of Richfield adopted a [Complete Streets Policy](#) in 2013 and has since invested in infrastructure that applies eight Guiding Principles to its street reconstruction projects. The [City's Active Transportation Plan](#) further advances efforts to create safer, more sustainable transportation options.

With these policies in place, the City continues to expand and improve its multimodal network. Several pedestrian bridges and underpasses have been constructed to enhance transportation infrastructure. Restriping projects and the installation of roundabouts have further improved roadway safety and traffic flow. The

**Figure 03.2** Non-highway Vehicle Miles Traveled, Minnesota Department of Transportation



reconstruction of 76th Street transformed the former four-lane road into a two-lane corridor featuring bike lanes, sidewalks, a multi-use trail, and green boulevards lined with trees. These types of projects reduce emissions and other environmental impacts while also promoting positive public health impacts and community well-being.

**+ Objective 1:** Reduce city-wide transportation-related emissions and Vehicle Miles Traveled (VMT).

- 1.1** Share resources with residents regarding electric and plug-in hybrid electric vehicles (EV/PHEV) incentives, financing, charging infrastructure (*public and private*), benefits, etc.

- 1.2** Establish and implement a fleet electrification schedule that includes vehicle replacement and charging stations located at municipal facilities; include mobile equipment like lawn mowers and leaf blowers.

- 1.3** Encourage fewer individual in-city staff trips and more carpools. Prioritize using EVs, PHEVs, and e-bikes for shorter trips.

**+ Objective 2:** Encourage alternative forms of transportation, promoting a healthier mobility network.

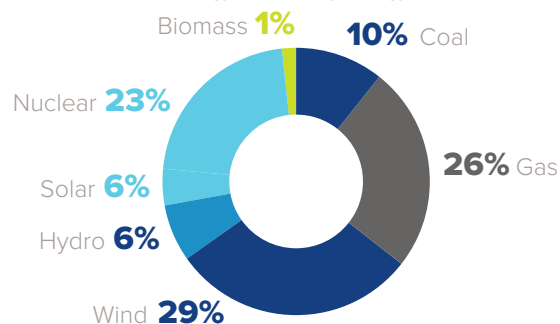
- 2.1** Work with partners like Move Minnesota and Commuter Services to promote and incentivize alternative transportation for staff and residents.
- 2.2** Include e-bikes as an eligible cost for the pilot cost-share program (*Goal 1, Action 3.3*)

## Goal 3 Promote Renewable Energy Installation & Purchasing

As noted previously, building energy use is a major contributor to the City's greenhouse gas emissions. As more buildings transition to electric technologies, it becomes increasingly important to ensure that the electricity powering those buildings comes from clean, carbon-free sources. In 2023, the State Legislature enacted a requirement for all electricity generation in Minnesota to be carbon free by 2040. Xcel Energy, the electricity provider serving Richfield, has committed to meeting this target by 2035.

Currently, Xcel Energy relies on fossil fuels for approximately 36% (Figure 03.3) of its electricity generation, a share that has decreased significantly over that past decade. While Xcel Energy is making substantial progress toward a clean electricity future, there are additional advantages to installing and purchasing local renewable energy. Local solar and other distributed resources can help accelerate the transition to clean electricity, provide more

**Figure 03.3** 2024 Xcel Energy Resource Mix  
Data Source: Xcel Energy Community Energy Report 2024

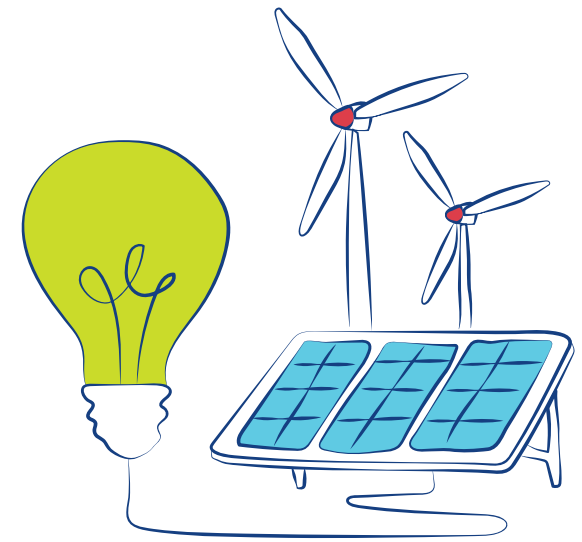


predictable and stable energy costs, and improve resilience when paired with battery storage.

The City has led by example by installing nine solar arrays on five buildings (*the Pool, Ice Arena, Public Works, Wood Lake Nature Center, and two liquor stores*). The City maintains a dashboard to share live production, which can be accessed [here](#). At least 88 residents and 7 businesses have installed solar on their rooftops, and nearly 300 residents participate in community solar gardens. Another alternative to installing clean energy is to participate in Xcel Energy's Renewable Energy Programs, like Renewable\*Connect where more than 1,000 Richfield households are currently participating.

**+ Objective 1:** Increase city-wide renewable energy purchase and generation.

- 1.1** Develop and distribute an educational brochure outlining current utility and state financial incentives and the benefits of installing solar.
- 1.2** Promote options for purchasing renewable energy (e.g., rooftop solar, community solar gardens) to residents and businesses. Identify affordable opportunities to increase equity throughout Richfield, working with low-income communities and with people of color.



**1.3** Conduct a solar feasibility study; identify sites in the city with the most potential and target outreach to them. Share financing and grant programs to increase affordability, especially for non-residential sites.

**+ Objective 2:** Increase municipal renewable energy purchasing and infrastructure installation.

- 2.1** Continue to research renewable energy infrastructure options for municipal facilities.
  - Identify municipal buildings with good solar payback potential.
  - Investigate feasibility of gas-alternative hot water systems.
  - Investigate adding renewable infrastructure in all new construction.
  - Identify additional funding sources to install more solar arrays on City sites.
- 2.2** Investigate the viability of where city lighting can be solar powered.

## Goal 4 Encourage Sustainable Design & Building Practices

With limited space for new construction in Richfield, sustainable design is essential. Sustainable design considers the full lifecycle of a building and its materials, emphasizing efficient systems and passive strategies to reduce a building's long-term energy footprint. Integrating these principles into both new construction and renovation projects can lead to substantial financial savings, lower environmental impacts, and improved building performance.

It is also important to apply sustainable design practices to renovating or deconstructing existing buildings. Construction and demolition (C&D) waste includes materials generated during the renovation, demolition, or construction of buildings and transportation infrastructure. In 2019, Minnesota generated an estimated 10.2 million tons of C&D waste, with approximately 1.4 million tons sent to landfills. This waste stream represents an opportunity to expand material reuse and extend the lifecycle of valuable building materials.

Richfield residents are incorporating sustainable design features into their own home improvement and construction projects. Many households

have added solar panels, natural landscaping, passive solar design, and accessory dwelling units. The City's Community Development Department supports these efforts through several environmentally oriented grant programs, such as Richfield Rediscovered Lot Sale Program, which outlines five sustainable construction categories that building owners are encouraged to include in their design plans.

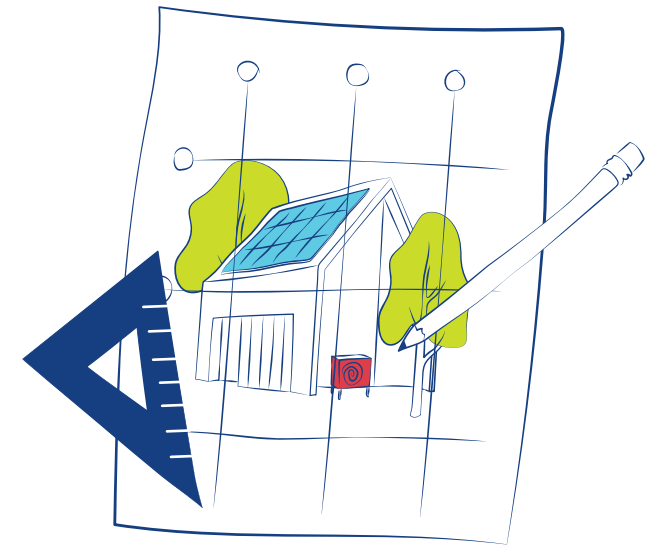
**+ Objective 1:** Develop sustainable building resources.

- 1.1** Develop guidelines to encourage builders/developers to integrate sustainable building practices into developments.

**+ Objective 2:** Adopt and promote green design and construction strategies.

- 2.1** Encourage deconstruction instead of demolition of properties by sharing information about Hennepin County's deconstruction grant program.
- 2.2** Set design standards on municipal projects to require restoration of soil permeability after construction and include native plants and compost.

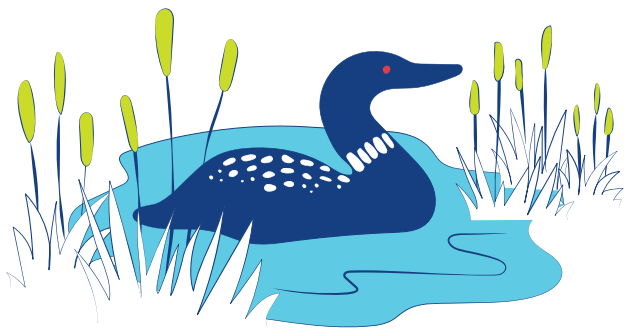
- 2.3** Review and reduce parking maximums to better promote alternative modes of transportation.
- 2.4** Request that developers submit plans during the design and review process on how their development could achieve "solar-ready" and "EV-ready" status.
- 2.5** Require that new municipal buildings be built using the SB 2030 energy standard and/or a green building framework that eliminates gas infrastructure and includes an equity lens.



## Goal 5 Strengthen & Expand Natural Resource Management

Effective natural resource and greenspace management is essential for maintaining a healthy urban ecosystem. Densely built environments like Richfield face unique challenges, including poor air quality from vehicles and building exhaust, increased runoff from impervious surfaces that can contaminate soil and water, and higher localized temperatures due to limited vegetation and heat-absorbing surfaces. A well-managed urban ecosystem helps mitigate these impacts. For instance, a healthy tree canopy improves air quality and provides shade, while native plantings support stormwater infiltration, soil health, and biodiversity.

Richfield's Public Works Department employs several environmentally friendly, beneficial maintenance practices that support this goal. Many parks now feature designated areas of native grasses and wildflowers and are not regularly mowed, which improves soil health, reduces erosion, and decreases emissions from



maintenance equipment. At Adam's Hill Park, for example, the City added a hydrodynamic separator on one of the inlets to trap trash, sediment, and oil from stormwater. Chemical use in parks has also been significantly reduced over the past decade as staff focus on establishing healthier turf that requires fewer treatments. Streetscape and park projects across the city have increased vegetation, including more tree planting, bee-friendly median designs, pollinator garden, and new flower beds. These efforts collectively strengthen Richfield's natural systems and enhance the ecological resilience of the community.

**+ Objective 1:** Establish land management standards and practices that lower inputs and maximize resilience.

- 1.1** Develop a land cover conversion plan that identifies City-owned underutilized turf and pavement that could be restored to natural habitat or beneficial vegetation.
- 1.2** Increase the amount of native species planted to provide habitat for pollinators and other wildlife.
- 1.3** Use compost and biochar in landscaping to boost soil health, resilience, and increase water retention.

- 1.4** Increase invasive species removal in public and private areas.
- 1.5** Require more greenspace in streetscape design and construction projects.
- 1.6** Create and implement natural resource management plans for large greenspaces throughout the parks system.

**+ Objective 2:** Strengthen Richfield's urban forest.

- 2.1** Using the boulevard tree inventory, identify vulnerable tree canopy.
- 2.2** Continue to protect mature legacy trees through regular maintenance, disease prevention, and tree-friendly urban planning and construction.
- 2.3** Conduct a land cover study in high urban heat areas to identify priority areas for increased tree canopy coverage, prairie restoration, and impervious surface reductions.
- 2.4** Continue to increase tree species diversity and communicate efforts to the public, especially providing informational materials to residents regarding tree selection and climate adaptive forestry.

+ **Objective 3:** Provide education and outreach on protecting natural resources.

**3.1** Encourage and educate residents and businesses to convert lawns to landscapes with diverse, indigenous, and drought tolerant flora, including pollinator gardens.

**3.2** Increase community education on invasive species identification and removal in alignment with Objective 1 Action 4.

+ **Objective 4:** Promote water conservation.

**4.1** Develop in-person, print, and online water conservation education for community members.

**4.2** Provide information to residents, businesses, and other community members on natural landscaping techniques, including low water and drought-tolerant plant species.

**4.3** Encourage high-efficiency irrigation systems with soil moisture sensors or programmable watering areas at businesses, faith organizations, and other institutions.

+ **Objective 5:** Improve stormwater management, preserving and enhancing wetlands, streams, lakes, and floodplain areas.

**5.1** Educate residents who want to help restore and revegetate shoreline, consistent with the City's shoreline management ordinance.

**5.2** Develop a salt reduction education program for residents, businesses, and other organizations.

**5.3** Promote citywide Adopt-A-Drain efforts to residents and businesses.

**5.4** Make improvements to stormwater drainage systems and litter capture efforts concurrent with pond dredging or other stormwater projects in parks.



## Goal 6 Reduce Waste Generated

Although waste makes up a relatively small share of Richfield's total GHG emissions (6%), reducing waste remains an important strategy to minimize negative environmental and health impacts. Waste that ends up in landfills or is processed at the Hennepin County Energy Recovery Center (*HERC*), contributes to air and water pollution, and puts increasing pressure on waste storage capacity. Further, emissions from disposal only account for a small portion of the total climate impact of consumer goods. Upstream emissions that occur during resource extraction, manufacturing, and transportation of goods are much greater than those generated by disposal.

Richfield households produce slightly more household waste per year than households in other inner ring suburbs ([Figure 03.4](#)). There are several strategies that households and businesses can adopt to reduce waste and its associated emissions. The most effective approach is to reduce waste through less consumption, purchasing more durable goods, and reusing items whenever possible. For items that need to be discarded, diversion strategies like recycling and organics composting help to lower emissions, conserve resources and preserve landfill capacity for materials that cannot be reused or recycled.

The City's waste reduction efforts have focused on municipal buildings systems, staff education, and household behavior and education. The City has

expanded organics collection at more municipal buildings, and organized residential collection began in 2021 to improve hauler efficiencies.

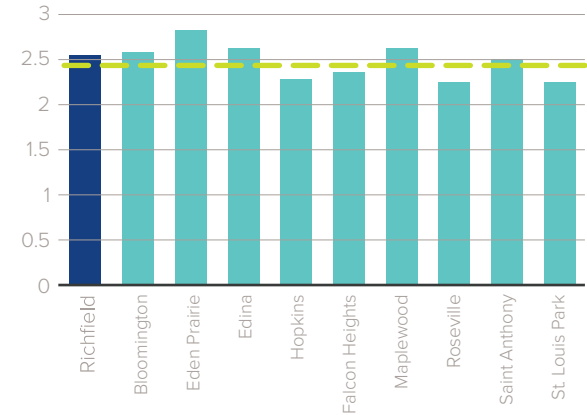
**+ Objective 1:** Create and share education on how to reduce waste.

- 1.1** Communicate with residents about events and businesses that promote waste reduction and reuse, such as Fix-it Clinics and the Richfield Fix-it Hub.
- 1.2** Develop educational materials that illustrate the impacts of waste generation and reduction behaviors and share smarter purchasing tips.
- 1.3** Continue to host and expand citywide drop-off events to collect materials that cannot be recycled curbside (*electronics, household hazardous waste, bulky items, etc.*).
- 1.4** Continue to build a robust education and resource page on the City's website.

**+ Objective 2:** Emphasize and expand recycling and organics collection efforts.

- 2.1** Enforce city code and conduct an educational campaign to strengthen recycling in multi-unit housing and businesses.
- 2.2** Starting with large city events, require that all events held at city facilities (*including park shelters*) are low or zero waste, following published city guidelines.

**Figure 03.4** Tons of waste generated per household per year in the inner ring suburbs of the Twin Cities, Regional Indicators Initiative, 2024.



**2.3** Make compostable products available for sale for events that are held at city facilities.

**+ Objective 3:** Reduce waste generated by municipal staff and operations.

- 3.1** Update the Sustainable Purchasing Policy to include environmentally preferred local vendors and environmentally preferable state cooperative purchasing contracts; annually train relevant staff on best practices.
- 3.2** Develop and implement low waste guidelines for all internal staff events.
- 3.3** Improve all waste management disposal systems in municipal buildings and with the municipal Green Team, coordinate related education for all staff. Work with the Green Team to create a friendly department or building competition.

## Goal 7 Improve Access to Local & Healthy Food

Access to healthy and affordable food is essential for ensuring that residents can maintain a nutritious diet. The food system in the United States is complex and often inequitable. Driven by profits and supply chains, heavily processed foods tend to be more affordable and accessible, while more local, fresher, and nutrient-rich options are more expensive and less attainable for many people. Limited access to grocery stores and lower household income levels contribute to food scarcity. As mentioned previously, there are seven census tracts in Richfield where the food security rates exceed the Hennepin County rate of 10.5%.

As grocery prices rise and agricultural systems are stressed by climatic changes, there will be greater emphasis on increasing locally grown food. There are many benefits that come from urban agriculture, community and backyard gardens, and other local food sources. For example, growing food locally can increase appreciation for the food and the growing process such that people may be less likely to waste it or throw it away (*Nova, 2020*). Locally grown food also reduces GHG emissions and supports other environmentally conscious habits through a stronger connection to land and water.

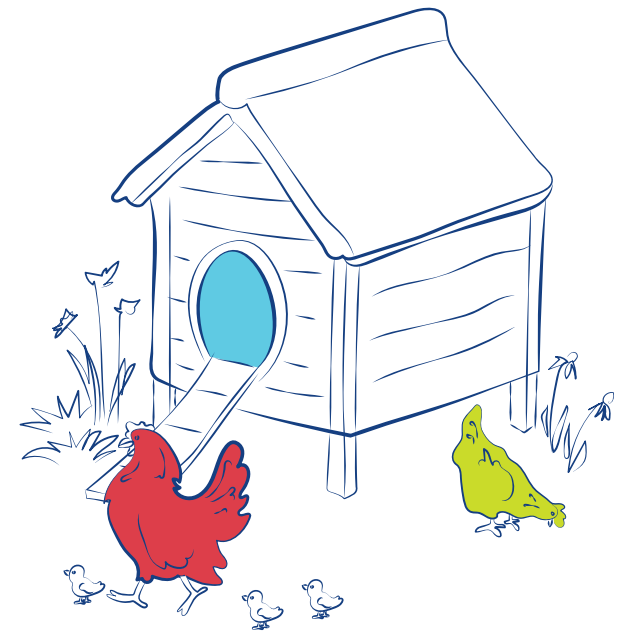
Richfield has a long history of organizations working to increase access to local and healthy food. The Richfield Farmers Market has operated from May to October for 35 years, with the Winter Market annually spotlighting more local food vendors. There are several affordable grocery stores in the community and organizations and initiatives like VEAP and Fare for All that further increase food access for residents across the city. Residents are allowed to keep fowl and bees per City Code, and community gardens are available in multiple locations around the city.

**+ Objective 1:** Increase the amount of healthy food grown by Richfield residents, shortening supply chain distance and strengthening the community's resilience.

- 1.1** Encourage edible landscapes and gardening on various types of properties (*homes, businesses, schools, etc.*).
- 1.2** Feature yards and properties that already demonstrate sustainable and edible landscapes in City outreach materials.
- 1.3** Encourage the creation of community gardens to fulfill the green space requirement for new developments.

**+ Objective 2:** Ensure all residents have nearby access to purchasing and consuming healthy food.

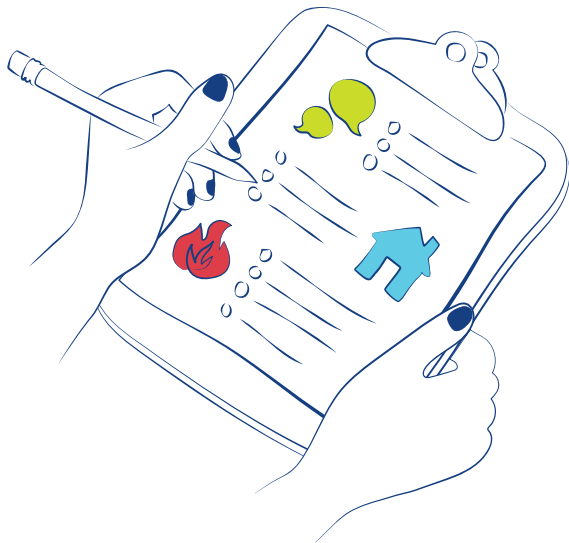
- 2.1** Continue to support innovative practices such as mobile food markets and pantries to bring food closer to under-resourced consumers. Develop a multi-lingual comprehensive list of local resources for staff to share with residents.
- 2.2** Explore partnership opportunities to provide education and skill development for families around healthy food selection and preparation.
- 2.3** Promote Community Supported Agriculture programs through existing programs and partnerships.



## Goal 8 Build Resilience Through Emergency Preparedness & Public Health

As climate hazards increase in frequency and intensity, we must adapt our approach to emergency preparedness and public health. The City's Public Safety Department provides resources online to help residents and businesses prepare for a range of emergencies, including severe weather events. Residents can further strengthen community resilience by participating in training through the Richfield Community Emergency Response Team (CERT).

As climate-related risks grow, it is increasingly important for community members to be prepared for and able to respond to both shocks and ongoing stressors. Shocks include acute events such as high windstorms or tornadoes, heavy precipitation that causes flash flooding, and severe snowfall that can make travel unsafe or



impassable. Stressors, while often less visible, can pose serious threats to health and safety. For example, prolonged heatwaves reduce the body's ability to cool and recover, increasing the risk of heat exhaustion or heat stroke.

Certain populations are more vulnerable to these hazards, including older adults, individuals with pre-existing health conditions, children, lower-income households, and people with limited English proficiency. To reduce risks for these groups, the City can prioritize its Public Health outreach to ensure residents are aware of and can access resources necessary to maintain their health and safety. Richfield partners with the City of Bloomington to provide public health services to residents, offering broad range programs that support overall well-being. During emergencies, this public health partnership is a valuable asset for coordinating responses and addressing urgent community needs.

**+ Objective 1:** Ensure all residents are adequately equipped to prepare for and respond to climate hazards.

- 1.1** Integrate climate hazards into City emergency preparedness and response planning.
- 1.2** Expand community-based emergency training and preparedness, offering courses in multiple languages.

- 1.3** Identify and share which buildings can be used as cooling and heating spaces or emergency shelters during or after extreme weather events.
- 1.4** Share resources with residents and businesses about how to prepare for and respond to extreme weather events, including prolonged heat waves, poor air quality days, extreme storms, and heavy precipitation events.
  - Utilize CivicSend and other alert systems to notify residents of severe weather events and the dangers of extreme heat and poor air quality.

**+ Objective 2:** Increase access to public health resources to reduce health-related vulnerabilities.

- 2.1** Partner with Bloomington to integrate climate-related health risks into public health programming.
- 2.2** Conduct culturally appropriate outreach and engagement to broaden the reach of public health resources, with a focus on vulnerable populations.
- 2.3** Partner with Bloomington to equip the Mobile Health Hub so that it can be utilized to respond to disaster events.

## Goal 9 Strengthen Internal Capacity

This plan is not intended to be a standalone document. Effective implementation will require buy-in across City departments and support from leadership. Building strong internal capacity involves consideration of climate and sustainability actions in everyday decision-making, City policies, budgets, and events. To ensure the plan is implemented equitably, the City must prioritize the needs of our most vulnerable residents and ensure they have adequate resources and support to benefit from climate initiatives. This goal focuses on institutionalizing climate and sustainability action across City operations so that climate actions become routine and long-lasting.

+ **Objective 1:** Prioritize equity throughout the implementation of this plan.

- 1.1 Directly engage vulnerable communities and use multi-lingual resources and personnel to reduce barriers.
- 1.2 Provide training and tools for City staff to integrate equity and culturally appropriate considerations into outreach, project planning, and program delivery.

+ **Objective 2:** Institutionalize climate and sustainability into city policies, programs, and budget.

- 2.1 Review Citywide planning documents (e.g., *Strategic Plan*, *Comprehensive Plan*), policies, procurement processes, and budgets to identify opportunities to incorporate climate action.
- 2.2 Develop criteria for the City's budgeting, capital improvement planning, City events, and procurement processes that support emissions reductions and climate resilience.
- 2.3 Identify funding opportunities to support long-term implementation of climate and sustainability initiatives.
- 2.4 Celebrate and share success of plan implementation with community members.

+ **Objective 3:** Ensure City staff are aware of the climate action plan and actively integrate actions into their work.

- 3.1 Designate climate or sustainability liaisons within each department to participate in a Green Team that coordinates plan implementation.



- 3.2 Encourage department leaders to consider emissions reductions and climate risks, as relevant, to their respective operations and programs.
- 3.3 Recognize and celebrate successes and innovations across departments that advance initiatives included in this plan.



# Climate Action Plan



# Background

- Initial plan written in 2020
- 34 actions were completed or ongoing
- Several actions needed to be rewritten or removed
- Written before a budget/strategic plan
  - 2022 CAP Action Prioritization





## Progress

### Building Energy:

- ☑ Completed the Partners in Energy program and fully executed the related implementation plan
- ☑ Used \$43,000 of American Rescue Plan Act (ARPA) funds to implement electric efficiency upgrades at City Hall and the parking lot lighting.
- ☑ Completed 14 municipal building audits using ARPA funds to identify gas and electric efficiency upgrade opportunities.
- ☑ Received Energy Efficiency and Conversation Block Grant (EECBG) funding to implement electrical efficiency upgrades and install LED lighting inside City Hall, Fire Station #2, and three municipal liquor stores.

### Sustainable Transportation:

- ☑ Contracted with Sawatch Labs to conduct an electric vehicle suitability assessment/fleet study to understand to support fleet electrification.
- ☑ Passed an ordinance requiring bike parking at all multi-unit housing and commercial developments.

### Natural Resources:

- ☑ Conducted a pond inventory and created improvement plans
- ☑ Implemented low-salt training and practices to decrease salt application.

### Waste:

- ☑ Added small electronics collection as an additional free service for residents during one of the annual shred events.
- ☑ Organized residential solid waste collection, with three haulers providing service to 1 to 3-unit properties.
- ☑ Many municipal buildings have implemented organics collection, including City Hall, Community Center, Public Works, Water Plant, and Wood Lake Nature Center.

### Local and Healthy Food:

- ☑ Launched multiple pocket community gardens in parks, including the main location in Veterans Park.
- ☑ The City initiated a toolshed lending library and an annual seed swap.
- ☑ Revised the fowl ordinance to allow for more fowl per household to be kept in the city with increased education and license requirements.
- ☑ City staff created a walkshed map to identify areas across the city that are not within one mile of a grocery store.

# Updates/New Content

- This CAP adopts the State goals to reduce emissions 50% (*from 2018*) by 2030 and to be carbon neutral by 2050.
- Climate Snapshot
  - Greenhouse Gas Emissions
  - Climate Change in Richfield
  - Vulnerability Assessment
- 2 new goals
  - Public Health and Emergency Preparedness
  - Strengthening Internal Capacity

## Climate Change in Richfield

Due to rising greenhouse gas emissions, global temperatures are increasing at an accelerated pace. In 2023, average annual global temperatures spiked to 1.54°C (2.77°F) above pre-industrial levels, becoming the first individual year to exceed the 1.5°C warming threshold set by the Paris Climate Agreement ([Berkeley Earth Temperature Report](#)). In 2024, the global average annual temperature was estimated at 1.62°C (2.91°F). Because the Paris Climate Agreement target is based on long-term average temperatures, the target has not yet been exceeded. Nevertheless, 2025 is on track to be the third warmest year on average just behind 2023 and 2024, respectively, and scientists now anticipate that we will cross the 1.5°C threshold by 2030 ([World Meteorological Organization](#)).

Rising global temperatures are contributing to changes in our climatic and Earth systems. There has been a noticeable increase in heavy precipitation events worldwide, hurricanes have become more frequent and intense, deadly heatwaves have become more common, and droughts are stressing water sources and agricultural productivity. Critical Earth systems like ocean currents, permafrost, glaciers, and coral reefs are being pushed to their tipping points.

Locally, Richfield is already feeling the effects of climate change. Autumns have become extensions of hot summers, with temperatures hitting 90°F in October twice in the past three years. Air quality alerts have significantly increased in frequency and severity over the past few years due to wildfire smoke from the western United States, Canada, and northern Minnesota ([Figure 02.1](#)). After periods of drought, the Twin Cities has experienced heavy rain events that have led to flash flooding. These hazards limit outdoor activities and threaten human health, especially for vulnerable groups.

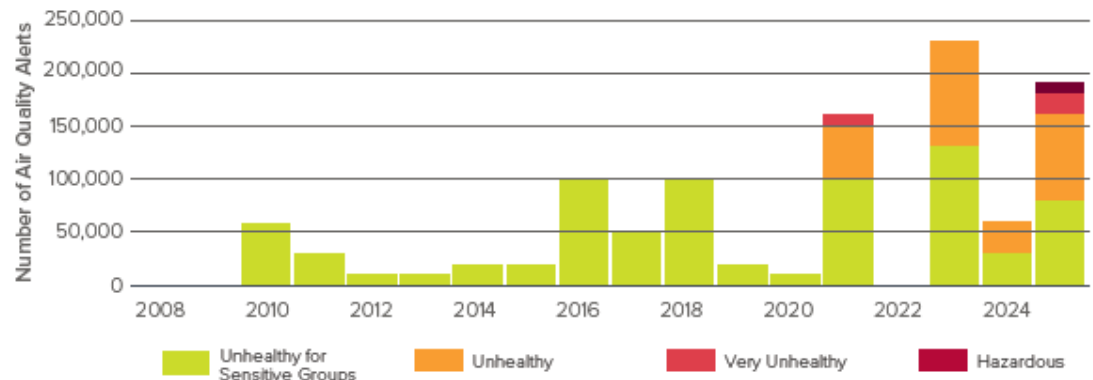
As global temperatures rise, we will continue to see local impacts in Richfield, especially changes in precipitation patterns and heatwaves. The University of Minnesota created an interactive

online tool called CLIMAT, which provides localized climate projections for communities across the state. The tool allows users to visualize what Minnesota's future climate might look like under different emissions scenarios, variables, and time periods. Using the mid-century, high emissions scenario at the county level, we can expect the following projections:

### + Warmer summers:

Average summer high temperatures are expected to be 87.0°F by midcentury, an increase by 4.8°F above the historical average (1995 – 2014). The number of days annually that exceed 90°F is projected to increase to about 43 days, or 22 days above the historical average (1995-2014).

**Figure 02.1** Summer Air Quality Days  
Data Source: Minnesota Pollution Control Agency via the Minnesota Star Tribune



## 1 Extreme Heat & Urban Heat Island Effect:

Richfield is experiencing more days with temperatures above 90°F and longer heat waves. Areas with a high concentration of pavement and buildings become even hotter than other areas because these materials retain heat from the sun, known as the urban heat island effect. In these areas, hot days are even more hazardous because of the additional heat effect.

The greatest risk of exposure to extreme heat is near highways (*I35W, I494, Highway 62, Highway 77*), arterial roads, and commercial districts. Cooler areas of the City are near Wood Lake Nature Center, Veteran's, Augsburg, Adams Hill, Donaldson, and Taft parks.

### + Vulnerable Populations:

- **Adults over 65** (*19% of Richfield Residents*): More prone to heat-related illnesses, such as heat stroke and dehydration. Those who live alone, do not have access to air conditioning, and who have limited social support are particularly vulnerable.
- **Young children** (*5% under the age of 5*): Higher risk of dehydration and heat exhaustion when spending time outside on very hot days. Young children may lack the judgement to limit their exertion and remember to hydrate while playing outside during hot weather.



- **Low-income households** (*29% are cost-burdened*): May struggle to afford air conditioning units or increased energy bills associated with running air conditioning.
  - **Renters in multi-family housing** (*39% of housing units*): May not have central air conditioning or the ability to afford a window unit.
  - **Outdoor workers** (*3% of workers in construction*): Increased risk of heat stroke and other heat-related illnesses with prolonged exposure to excessive heat.
  - **Non-English speakers** (*9% speak English less than 'very well'*): May face challenges receiving or understanding heat warnings or cooling resources.
- + **Natural Systems:**
- Extreme heat and higher temperatures can stress trees and other vegetation, limiting their ability to function and making them susceptible

to disease, while contributing to higher rates of mortality. Higher winter temperatures can contribute to more rain and ice events that can damage trees when ice or heavy, wet snow accumulates on branches.

### + Infrastructure:

Roads, bridges, and pipes are all susceptible to extreme temperatures, and drastic winter temperature swings that come from an increase in freeze/thaw cycles. Aging infrastructure and infrastructure that was not designed to handle extreme temperatures may be more vulnerable to high heat and/or freeze/thaw cycles. Further, more frequent freeze/thaw cycles can contribute to icy surfaces that can degrade pavement, create dangerous travel conditions, and increase salt application that further worsens water quality.

# Action Plan

This section includes the action plan, which consists of nine goals supported by objectives and actions designed to reduce GHG emissions, strengthen climate resilience, and improve public health. The actions build upon the previous version of this plan and have been refined based on the City's progress to date, continued relevance of strategies, and the addition of new actions needed to achieve the City's evolving goals.

The goals that are included in this updated CAP are:

- + **Goal 1: Develop & Promote Energy Efficiency.**  
Understand Richfield's energy use and identify opportunities to reduce consumption, lower costs, and lessen environmental impacts.
- + **Goal 2: Develop & Promote Sustainable Transportation.**  
Shift travel patterns toward more sustainable, active, and low-emission modes.
- + **Goal 3: Promote Renewable Energy Installation.**  
Reduce reliance on fossil fuels and expand education on incentives for installing renewable energy systems.
- + **Goal 4: Encourage Sustainable Design & Building.**  
Ensure design and construction plans incorporate environmental best practices that improve building performance and environmental impact throughout the life cycle.
- + **Goal 5: Strengthen & Expand Natural Resources.**  
Inventory and enhance the community's natural resources while engaging residents in the stewardship of trees, parks, and bodies of water.
- + **Goal 6: Reduce Waste Generated.**  
Promote responsible disposal, increased recycling and organics collection while moving toward a circular and low waste economy.
- + **Goal 7: Improve Access to Local & Healthy Food.**  
Expand access to purchasing, growing, and producing healthy and affordable food.
- + **Goal 8: Build Resilience through Emergency Preparedness & Public Health.**  
Prepare for future climate impacts through community preparedness efforts and public health resources and services that support health and well-being.
- + **Goal 9: Strengthen Internal Capacity.**  
Identify opportunities to integrate climate and sustainability actions into city policies, programs, budgets, and events. Encourage department leaders to consider impacts on emissions and resilience in daily work.

The first seven goals were initially identified in the original plan. A goal to build resilience through emergency preparedness and improved public health has been added to highlight the increasing need for climate adaptation and the essential role of public health in helping residents withstand and recover from climate-related hazards. The last goal has been added to bolster the effectiveness of this plan throughout departments in Richfield.

## Goal 8 Build Resilience Through Emergency Preparedness & Public Health

As climate hazards increase in frequency and intensity, we must adapt our approach to emergency preparedness and public health. The City's Public Safety Department provides resources online to help residents and businesses prepare for a range of emergencies, including severe weather events. Residents can further strengthen community resilience by participating in training through the Richfield Community Emergency Response Team (CERT).

As climate-related risks grow, it is increasingly important for community members to be prepared for and able to respond to both shocks and ongoing stressors. Shocks include acute events such as high windstorms or tornadoes, heavy precipitation that causes flash flooding, and severe snowfall that can make travel unsafe or

impassable. Stressors, while often less visible, can pose serious threats to health and safety. For example, prolonged heatwaves reduce the body's ability to cool and recover, increasing the risk of heat exhaustion or heat stroke.

Certain populations are more vulnerable to these hazards, including older adults, individuals with pre-existing health conditions, children, lower-income households, and people with limited English proficiency. To reduce risks for these groups, the City can prioritize its Public Health outreach to ensure residents are aware of and can access resources necessary to maintain their health and safety. Richfield partners with the City of Bloomington to provide public health services to residents, offering broad range programs that support overall well-being. During emergencies, this public health partnership is a valuable asset for coordinating responses and addressing urgent community needs.

+ **Objective 1:** Ensure all residents are adequately equipped to prepare for and respond to climate hazards.

- 1.1 Integrate climate hazards into City emergency preparedness and response planning.
- 1.2 Expand community-based emergency training and preparedness, offering courses in multiple languages.

- 1.3 Identify and share which buildings can be used as cooling and heating spaces or emergency shelters during or after extreme weather events.
- 1.4 Share resources with residents and businesses about how to prepare for and respond to extreme weather events, including prolonged heat waves, poor air quality days, extreme storms, and heavy precipitation events.
  - Utilize CivicSend and other alert systems to notify residents of severe weather events and the dangers of extreme heat and poor air quality.

+ **Objective 2:** Increase access to public health resources to reduce health-related vulnerabilities.

- 2.1 Partner with Bloomington to integrate climate-related health risks into public health programming.
- 2.2 Conduct culturally appropriate outreach and engagement to broaden the reach of public health resources, with a focus on vulnerable populations.
- 2.3 Partner with Bloomington to equip the Mobile Health Hub so that it can be utilized to respond to disaster events.



## Goal 9 Strengthen Internal Capacity

This plan is not intended to be a standalone document. Effective implementation will require buy-in across City departments and support from leadership. Building strong internal capacity involves consideration of climate and sustainability actions in everyday decision-making, City policies, budgets, and events. To ensure the plan is implemented equitably, the City must prioritize the needs of our most vulnerable residents and ensure they have adequate resources and support to benefit from climate initiatives. This goal focuses on institutionalizing climate and sustainability action across City operations so that climate actions become routine and long-lasting.

**+ Objective 1:** Prioritize equity throughout the implementation of this plan.

- 1.1** Directly engage vulnerable communities and use multi-lingual resources and personnel to reduce barriers.
- 1.2** Provide training and tools for City staff to integrate equity and culturally appropriate considerations into outreach, project planning, and program delivery.

**+ Objective 2:** Institutionalize climate and sustainability into city policies, programs, and budget.

- 2.1** Review Citywide planning documents (e.g., *Strategic Plan*, *Comprehensive Plan*), policies, procurement processes, and budgets to identify opportunities to incorporate climate action.
- 2.2** Develop criteria for the City's budgeting, capital improvement planning, City events, and procurement processes that support emissions reductions and climate resilience.
- 2.3** Identify funding opportunities to support long-term implementation of climate and sustainability initiatives.
- 2.4** Celebrate and share success of plan implementation with community members.

**+ Objective 3:** Ensure City staff are aware of the climate action plan and actively integrate actions into their work.

- 3.1** Designate climate or sustainability liaisons within each department to participate in a Green Team that coordinates plan implementation.



- 3.2** Encourage department leaders to consider emissions reductions and climate risks, as relevant, to their respective operations and programs.
- 3.3** Recognize and celebrate successes and innovations across departments that advance initiatives included in this plan.



**Report Prepared By:**  
Karl Huemiller, Recreation Director

**Department Director:**  
Karl Huemiller, Recreation Director

**Item for Consideration:**  
**Veterans Park Improvements**

### **EXECUTIVE SUMMARY**

The Veterans Memorial Park project team is working with U+B Architects and Damon Farber Landscape Architects to develop a Veterans Memorial Park Schematic Vision Plan along with a project scope and prioritization. Staff with U+B Architects and Damon Farber will present the Veterans Memorial Park Vision Plan along with project priorities.

### **RECOMMENDED ACTION**

**Staff is seeking feedback on the Veterans Memorial Park Schematic Vision Plan. Specifically the location of the memorial garden, concept for the park path realignment and pavilion area improvements. Staff is also looking for direction on project scope prioritization.**

### **HISTORICAL CONTEXT**

#### **Local Option Sales Tax**

During 2022 budget discussions, staff and City Council noted the need for additional long-term funding for future large-scale public parks projects. The use of a Local Option Sales Tax (LOST) was identified as a potential funding method.

The City of Richfield was granted the authority by the Minnesota Legislature in 2023 to bring a Local Option Sales Tax of 0.5% (one-half percent) lasting up to 20 years to Richfield voters for three projects. These projects are the Wood Lake Nature Center Building (\$11M), the Richfield Community Center (\$45M), and Veterans Park Improvements (\$9M).

In November 2024, voters approved a LOST to place a tax on certain product sales or services within the municipality. All goods or services that are otherwise exempt from taxation are exempt from LOST.

### **EQUITABLE OR STRATEGIC CONSIDERATIONS OR IMPACTS**

**Equity:** Veterans Memorial Park is an important low-cost recreational amenity in the city. The improvements will enhance accessibility in the park and enhance the park natural areas.

**Strategic Plan:** This project best aligns with the strategic plan priority of Sustainable Infrastructure addressing all sub-initiatives of asset management, comprehensive

funding, and sustainability efforts.

**POLICIES (RESOLUTIONS, ORDINANCES, REGULATIONS, STATUTES, ETC.)**

None

**CRITICAL TIMING ISSUES**

None

**FINANCIAL IMPACT**

The construction budget with contingency for the park improvements is \$2,000,000. The budget includes general park improvements along with improvements to the pavilion and mini-golf building.

**LEGAL CONSIDERATIONS**

None

**ALTERNATIVE RECOMMENDATION(S)**

None

**ATTACHMENTS**

1. 2026-02-24 Veterans Park - Council Work Session

# VETERANS MEMORIAL PARK

## Improvements

**City of Richfield**

February

**2026**

**Council Work Session**

## CONSULTANT TEAM

**U+B** architecture & design, inc.

**DF/** DAMON FARBER  
LANDSCAPE ARCHITECTS

**LOEFFLER**  
CONSTRUCTION

# CONTENTS

---

**Existing Conditions & Analysis**

---

**Overall Vision Plan**

---

**Priorities List**

---

**Priorities 1-13**

---

**Other Priorities**

---

**Completed Priorities**

---

# 01 / EXISTING CONDITIONS

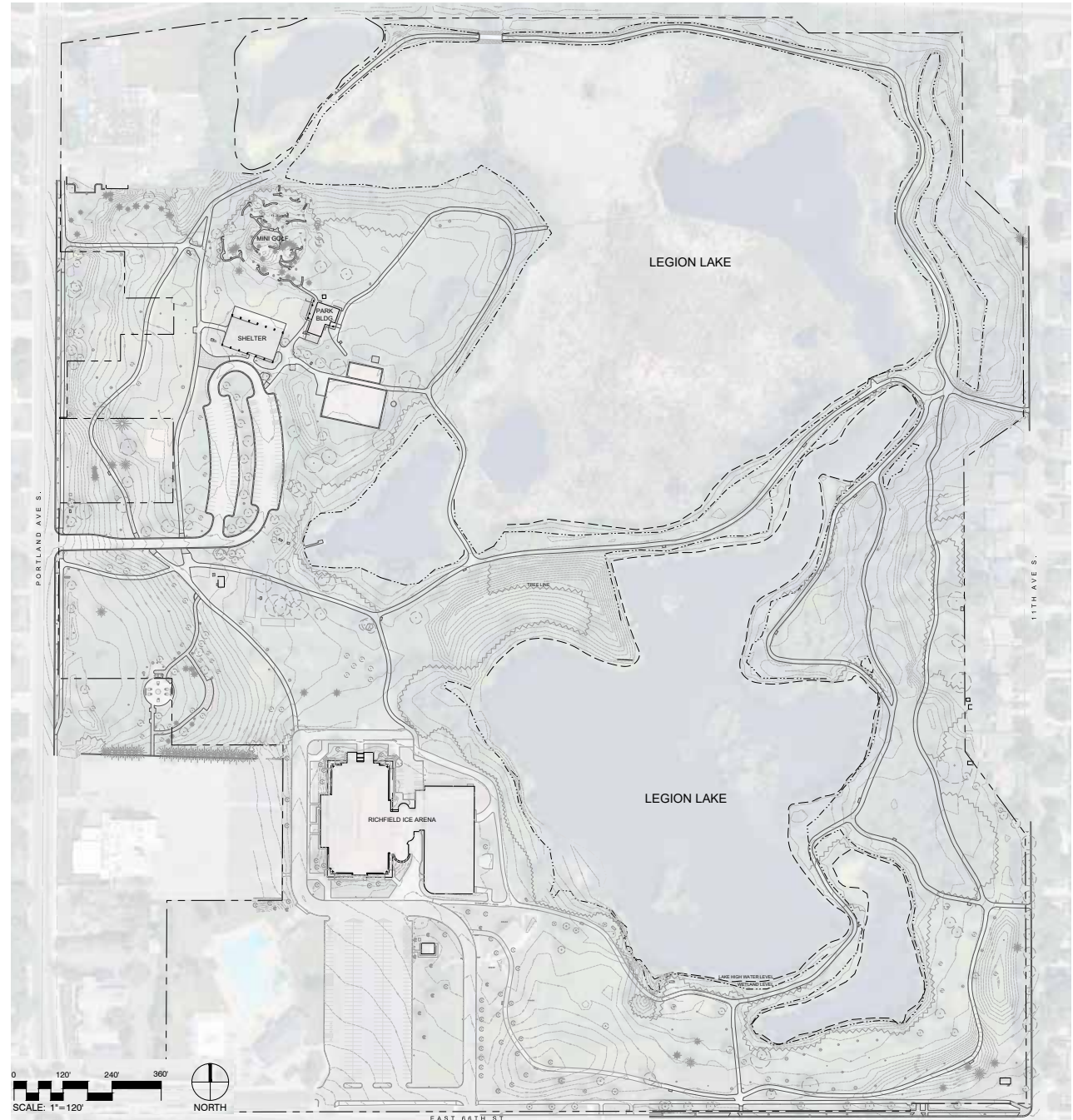
## ANALYSIS

### Opportunities

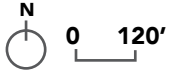
- Realign trails to define park amenities, establish hierarchy and eliminate unnecessary redundancy
- Implement landscape strategies to better define the audience lawn at the bandshell
- Improve overall landscape sustainability
- Develop overlook along shore of Legion Lake
- Reconfigure layout at the pavilion area to improve functionality, synergy and arrival experience
- Repair & enhance park buildings
- Establish a primary trail loop suitable for races and organized events

### Constraints

- Lakes, wetlands, and existing trees limit trail realignment in the eastern half of park
- Park improvement funding limits the ability to implement all desired enhancements



# VETERANS PARK / PREVIOUS SCHEMATIC VISION PLAN



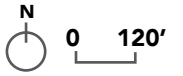
## PLAN KEY

- 1 COMMUNITY PLAZA
- 2 VETERANS MEMORIAL
- 3 AMPHITHEATER LAWN
- 4 MEMORIAL GARDEN

- PAVILION GATHERING
- MINI GOLF
- PLAYGROUND
- OVERLOOK
- INCREASED CANOPY
- MEMORIAL LAWN
- WOODLAND WALK
- NATIVE PRAIRIE



# VETERANS PARK / CURRENT SCHEMATIC VISION PLAN



## PLAN KEY

- 1 COMMUNITY PLAZA
- 2 VETERANS MEMORIAL
- 3 AMPHITHEATER LAWN
- 4 MEMORIAL GARDEN

- PAVILION GATHERING
- MINI GOLF
- PLAYGROUND
- OVERLOOK
- INCREASED CANOPY
- MEMORIAL LAWN
- WOODLAND WALK
- NATIVE PRAIRIE



# PRIORITIES

## STAFF PRIORITIZED ORDER

1. **Primary Trails** - Repave Primary (10' wide) Trails with Asphalt
2. **Memorial Garden** - Develop Memorial Garden in the Park
3. **Building Repairs** - Repair Facia & Soffits @ Mini Golf Building
4. **Pavilion Grounds** - Expand and Improve Pavilion Area Grounds
5. **Pavilion Structure** - Upgrade Pavilion Lighting and Electric
6. **Secondary Trails** - Repave Secondary (8' wide) Trails with Asphalt
7. **Tertiary Trails** - Convert some Trails to Gravel Surfacing
8. **Informal / Nature Paths** – Cover Informal Nature Paths with Wood Chips
9. **Wildlife Viewing Platform** - Develop Viewing Overlook Along Shore of Legion Lake
10. **Veterans Memorial Landscape** - Implement Landscape Strategies that Complement Memorial
11. **Southeast Landscape** - Enhance Sustainability of this Landscape
12. **Bandshell Landscape** - Augment Landscape to Define Audience Lawn, and Improve Shade & Connectivity

## FUTURE CONSIDERATIONS

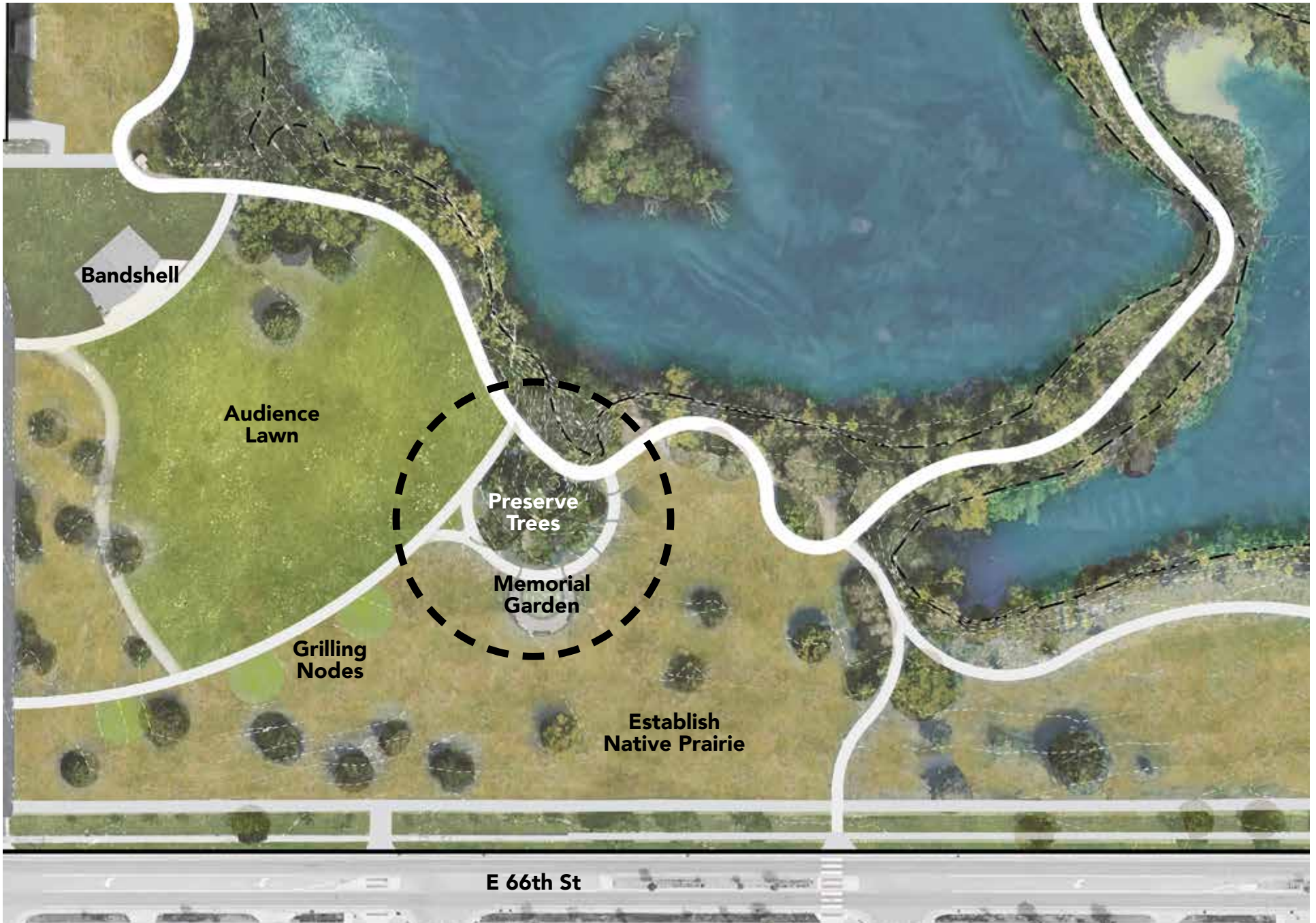
13. **Roof Replacement** - Replace Roof on Pavilion and Mini Golf Building (roof is only 20 years old)
14. **Lighting** - Determine future priority areas for lighting

# PRIORITY #1 / PRIMARY 10' WIDE ASPHALT TRAILS



- + primary 10' wide multi-use trails
- + ADA accessible
- + low maintenance
- + ideal for high- traffic areas
- + 1.5 mile race loop provided

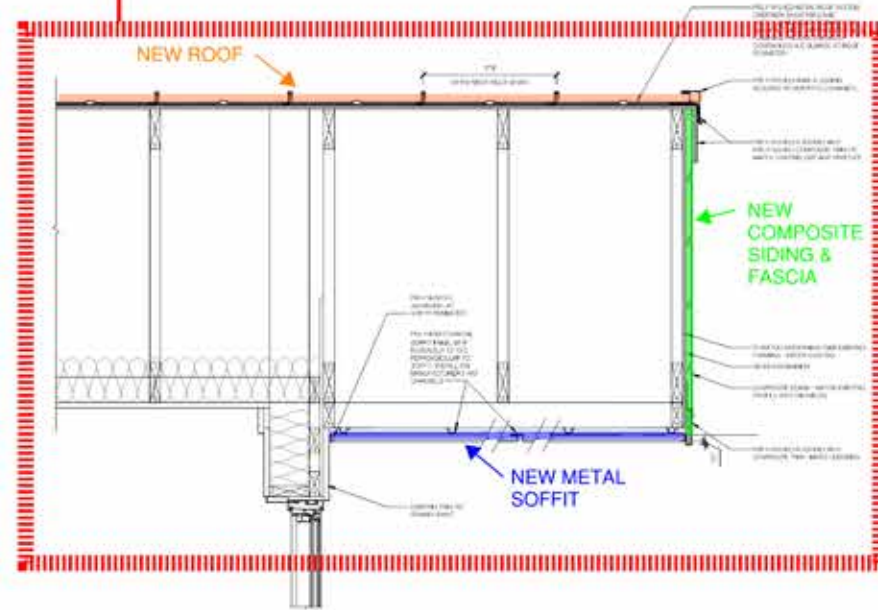
# PRIORITY #2 / MEMORIAL GARDEN



# PRIORITY #3 / FACIA & SOFFITS @ MINI GOLF BUILDING



SOUTHEAST CORNER OF EAVE

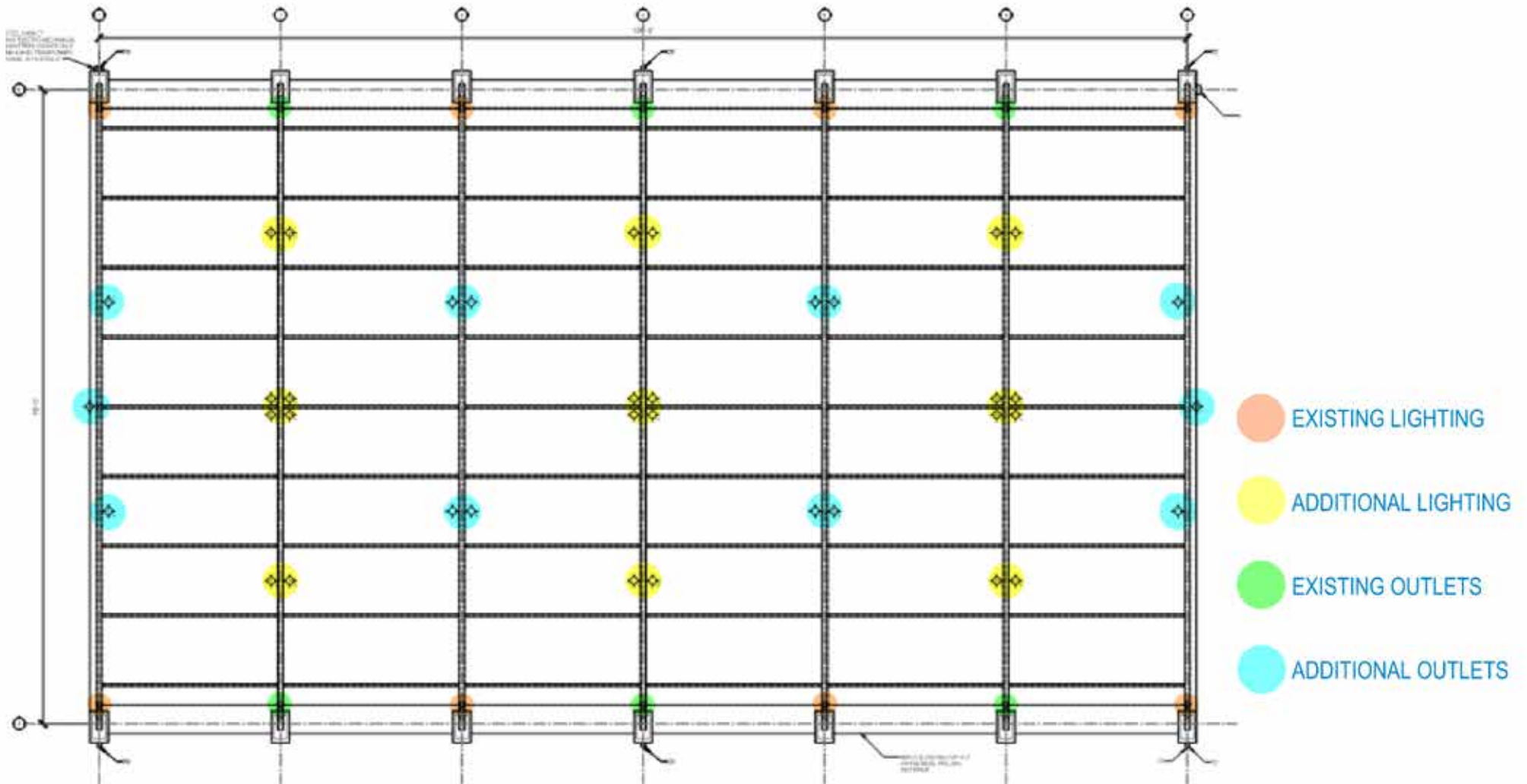


SECTION THROUGH SOUTH EAVE & SOFFIT

# PRIORITY #4 / PAVILION AREA IMPROVEMENTS



# PRIORITY #5 / PAVILION LIGHTING & ELECTRICAL UPGRADES



## PAVILION LIGHTING & ELECTRICAL

- Fixtures located to allow flexibility in programming

# PRIORITY #6 / TRAILS - SECONDARY 8' WIDE ASPHALT

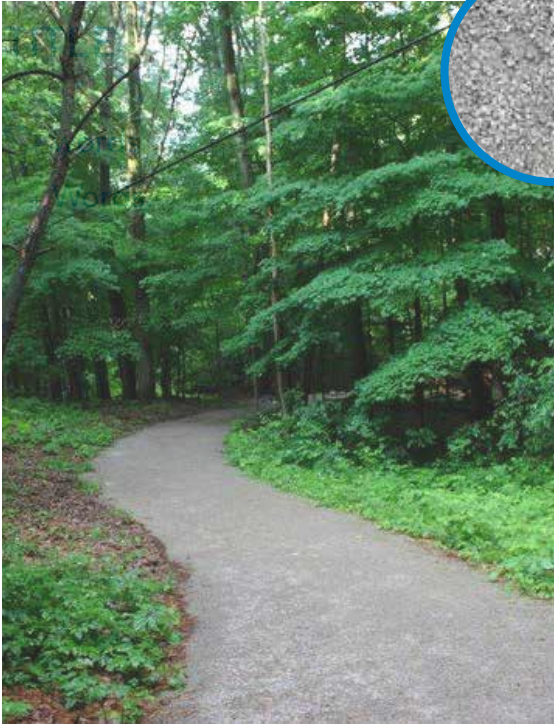


## Asphalt Paving

- + multi-use trails connections
- + low maintenance
- + ideal for high- traffic areas
- + allows pavement striping
- + ADA accessible



# PRIORITY #7 / TRAILS - GRAVEL

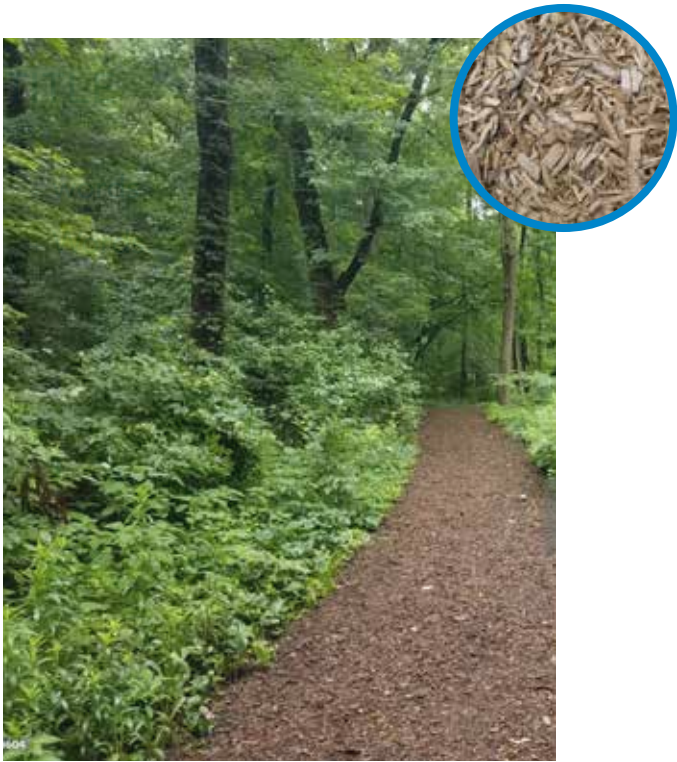


**class ii limestone**

- + secondary trails
- + compacted aggregate surface
- + more natural feel and appearance



# PRIORITY #8 / TRAILS - WOOD CHIP

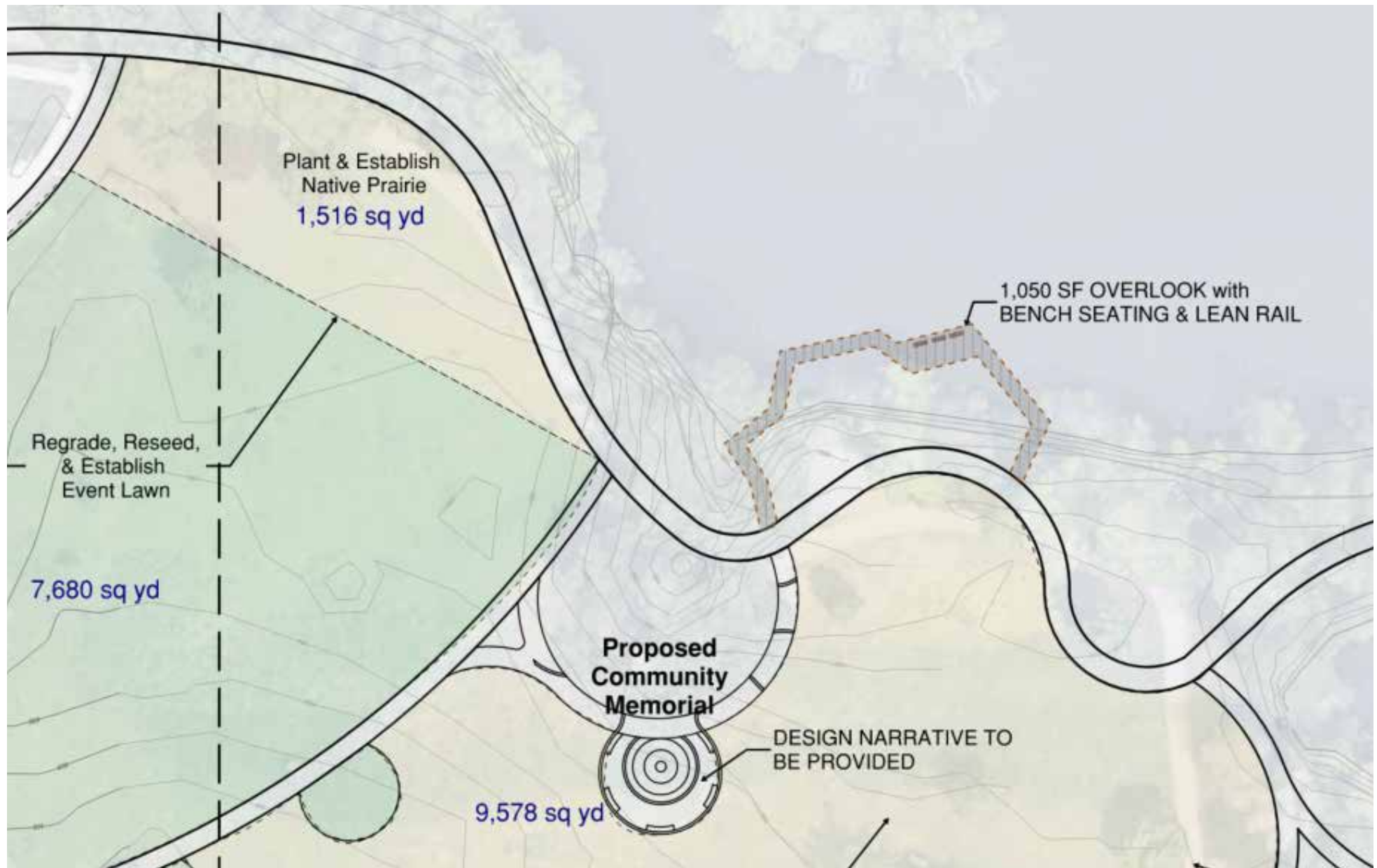


**wood mulch**

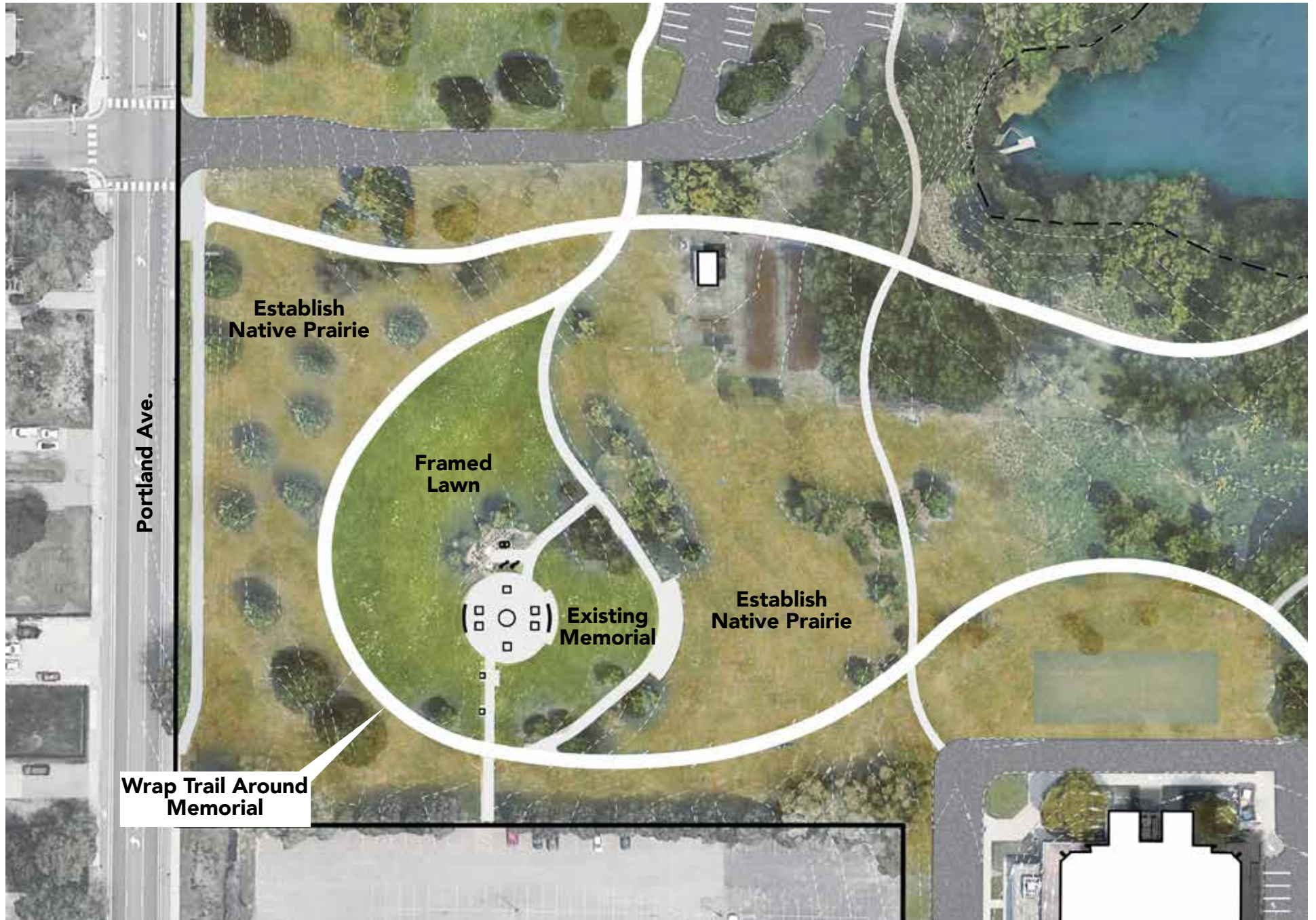
- + tertiary trails
- + permeable natural wood chips
- + natural feel and appearance



# PRIORITY #9 / WILDLIFE VIEWING PLATFORM



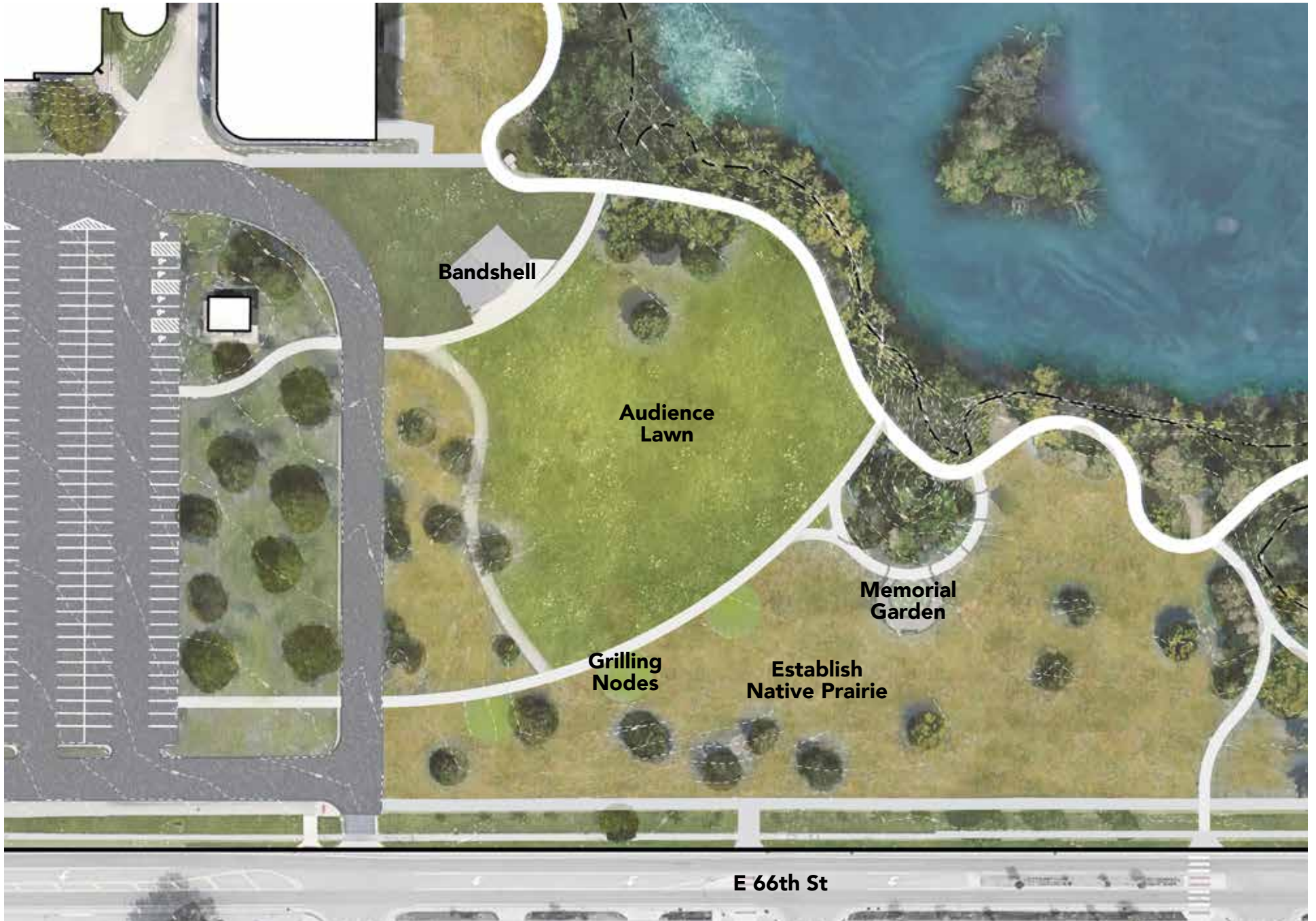
# PRIORITY #10 / VETERANS MEMORIAL LANDSCAPE IMPROVEMENTS



# PRIORITY #11 / SOUTHEAST CORNER LANDSCAPE IMPROVEMENTS



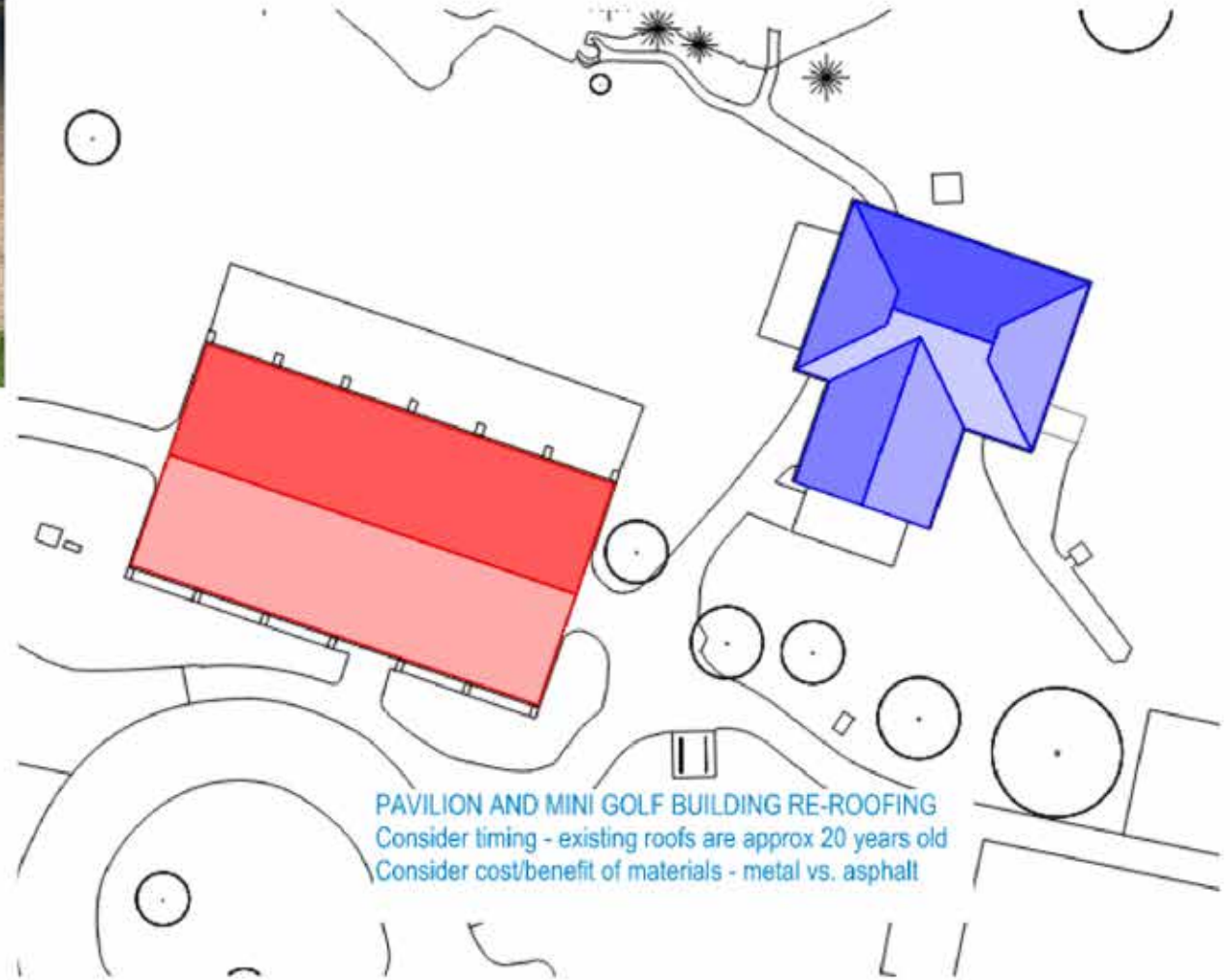
# PRIORITY #12 / BANDSHELL AREA LANDSCAPE IMPROVEMENTS



# FUTURE CONSIDERATION #13 / PAVILION & MINI GOLF BLDG. ROOF



TYPICAL ASPHALT SHINGLE ROOF HAS A 25 YEAR WARRANTY

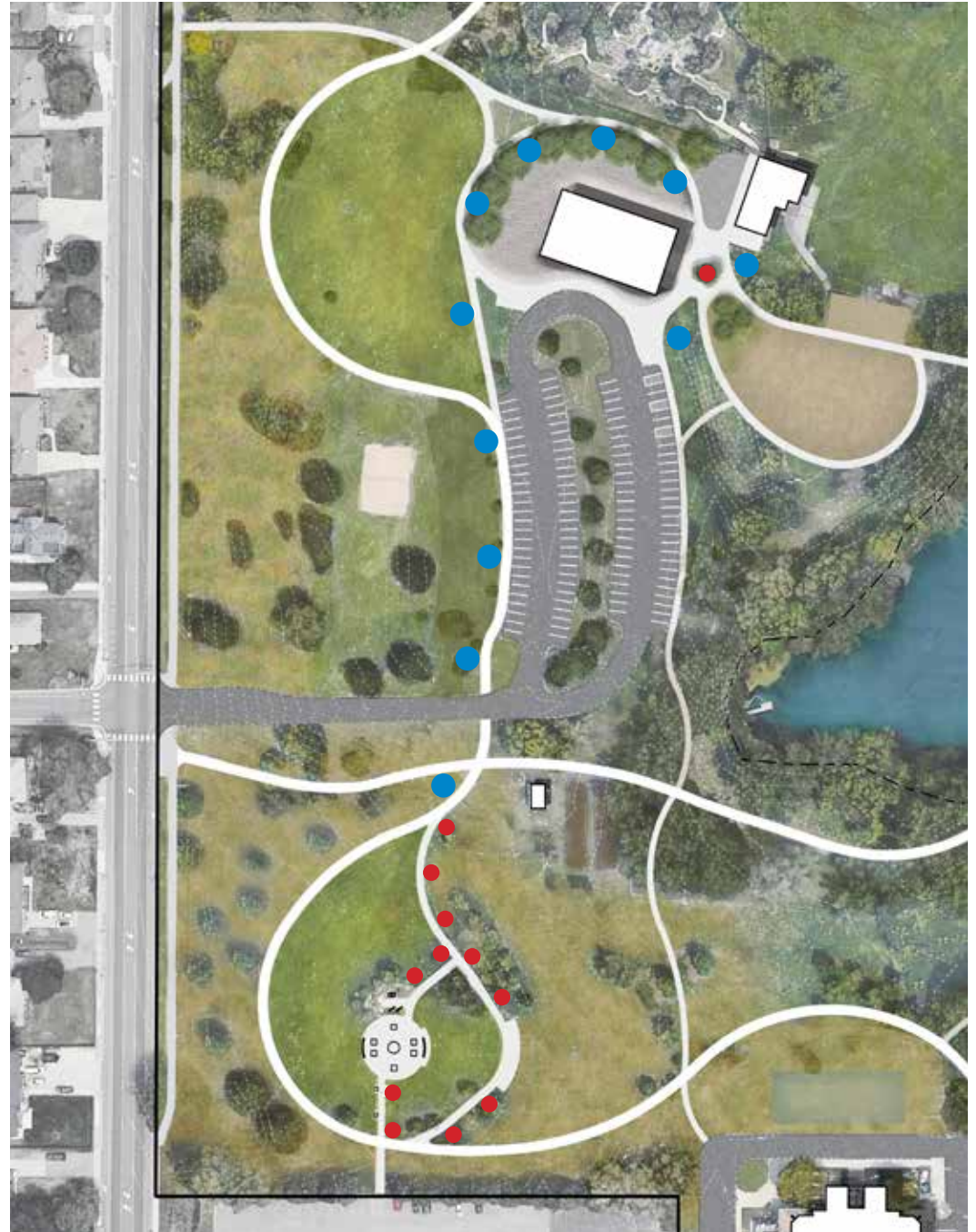


PAVILION AND MINI GOLF BUILDING RE-ROOFING  
Consider timing - existing roofs are approx 20 years old  
Consider cost/benefit of materials - metal vs. asphalt

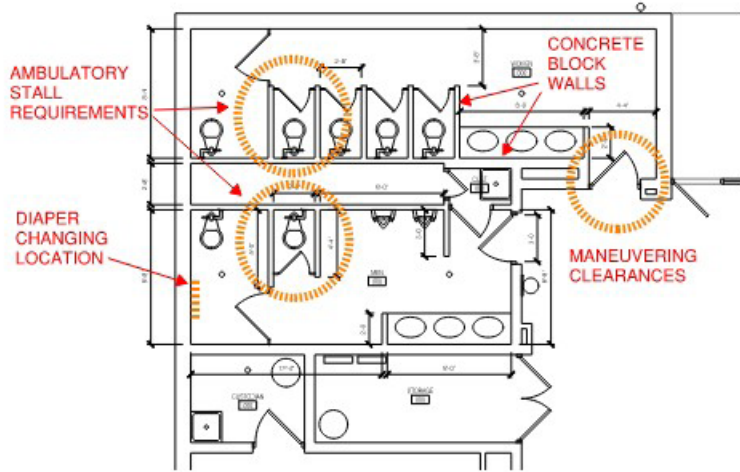
# FUTURE CONSIDERATION #14 / SITE LIGHTING

- Pole Light Fixture
- Bollard Light Fixture

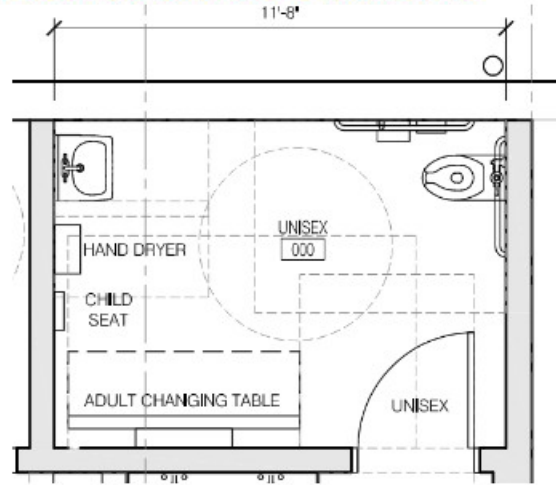
- + LED high-efficiency fixtures
- + Improved safety
- + Connects lighted corridor
- + Power infrastructure exists on site



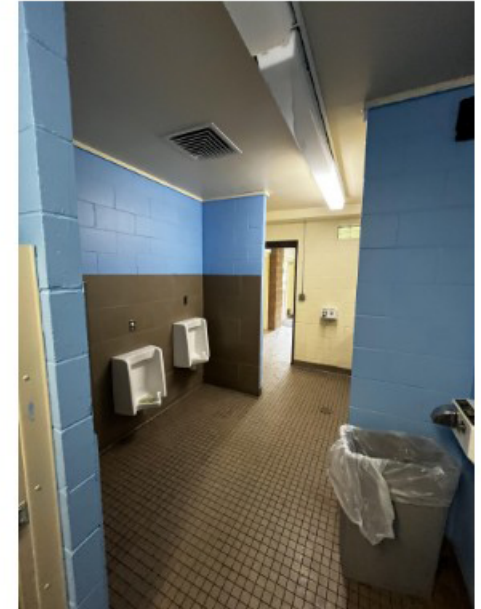
# OTHER PRIORITIES / MINI GOLF RESTROOM UPGRADES



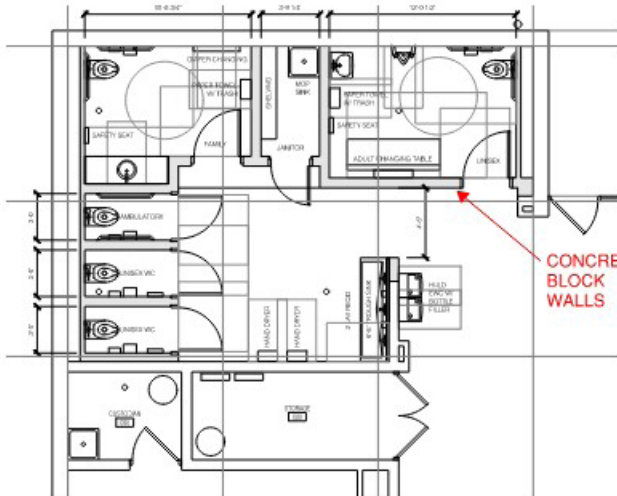
**EXISTING RESTROOM LAYOUT**  
- ADA code issues + constraints



**ENLARGED ADULT CHANGING RESTROOM**  
- Required clearances = larger restroom

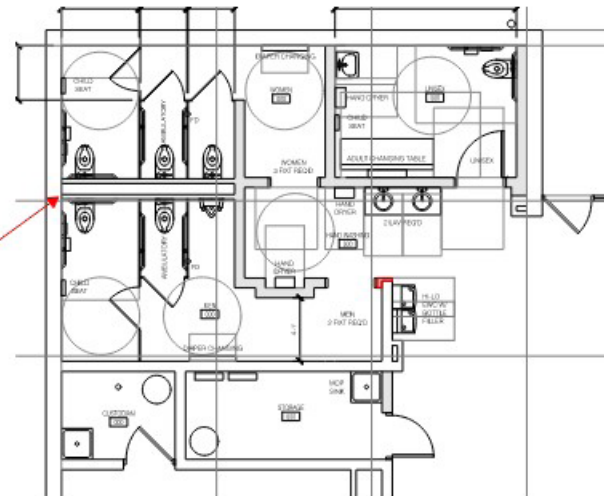


**EXISTING MEN'S RESTROOM**



**OPTION 1**

- All non-gendered
- 5 fixtures required - 5 provided + 1 urinal
- Child + adult diaper changing
- Common hand-washing
- Janitor closet



**OPTION 2**

- 1 non-gendered room
- 5 fixtures required - 6 provided + 1 urinal
- Child + adult diaper changing
- Common hand-washing
- Mop sink added to existing storage room



**EXISTING WOMEN'S RESTROOM**

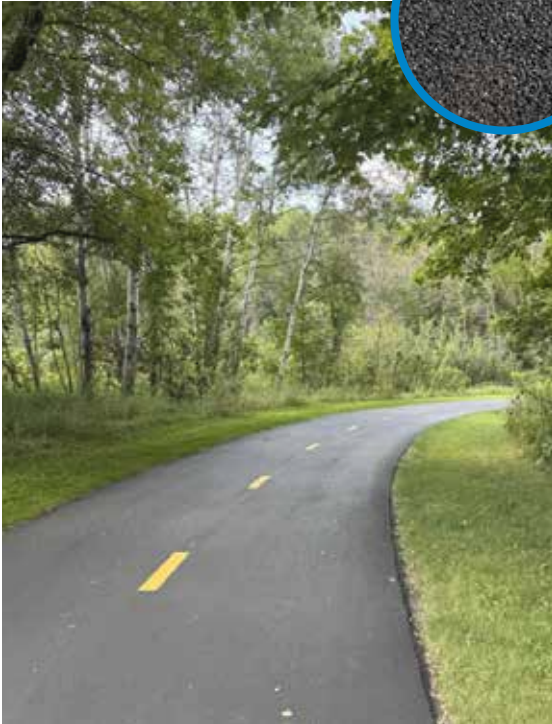




# COMPLETED PRIORITIES/ RINK 2 ROOF REPLACEMENT



# TRAIL SURFACING TYPES



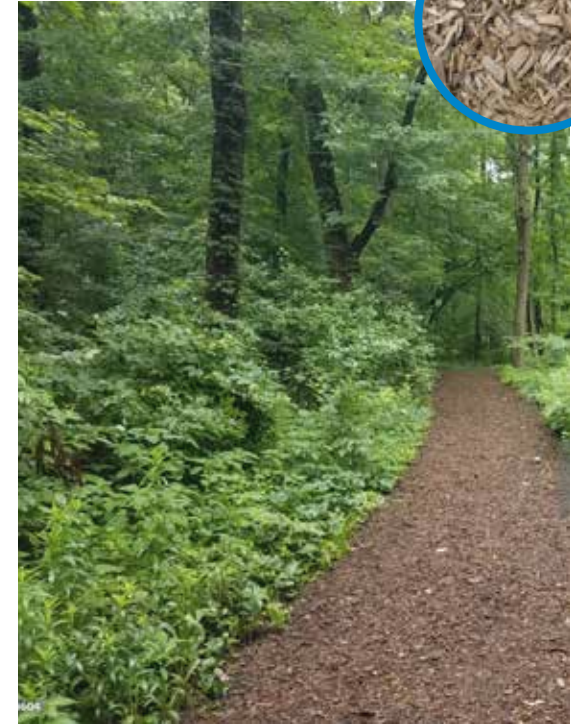
**Bituminous asphalt**

- + multi-use primary trails
- + low maintenance
- + ideal for high- traffic areas
- + allows pavement striping
- + ADA accessible



**class 2 limestone**

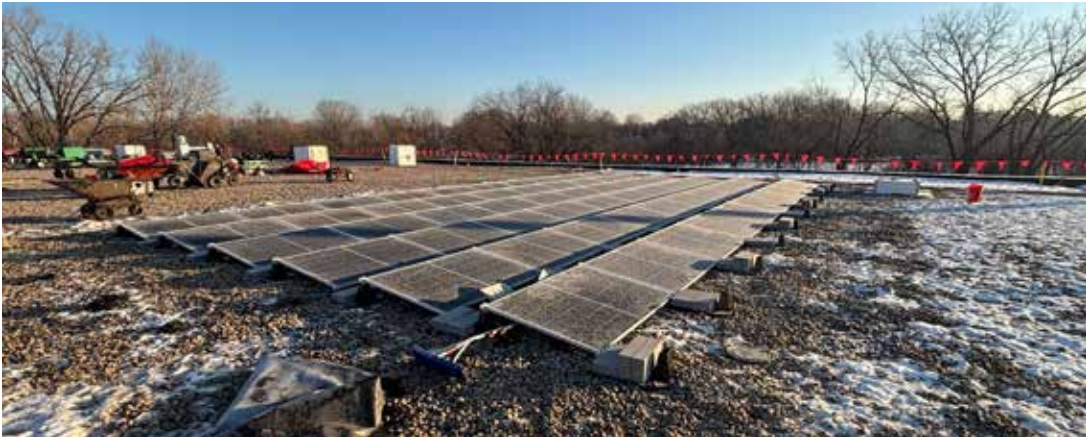
- + secondary trails
- + compacted aggregate surface
- + more natural feel and appearance



**wood mulch**

- + tertiary trails
- + permeable natural wood chips
- + natural feel and appearance

# NEW SOLAR ARRAY: ICE ARENA ROOF



# COST ESTIMATE

## BY PRIORITY ORDER

- 
1. \$1,110,000 **Primary Trails**
  2. \$60,000 **Memorial Garden**
  3. \$90,000 **Building Repairs**
  4. \$800,000 **Pavilion Grounds**
  5. \$70,000 **Pavilion Structure**
  6. \$260,000 **Secondary Trails**
  7. \$220,000 **Tertiary Trails**
  8. \$60,000 **Informal / Nature Paths**
  9. \$290,000 **Wildlife Viewing Platform**
  10. \$110,000 **Veterans Memorial Landscape**
  11. \$100,000 **Southeast Landscape**
  12. \$80,000 **Bandshell Landscape**
  13. \$550,000 **Roof Replacement (Metal)**  
\$500,000 **Roof Replacement (Asphalt Shingles)**